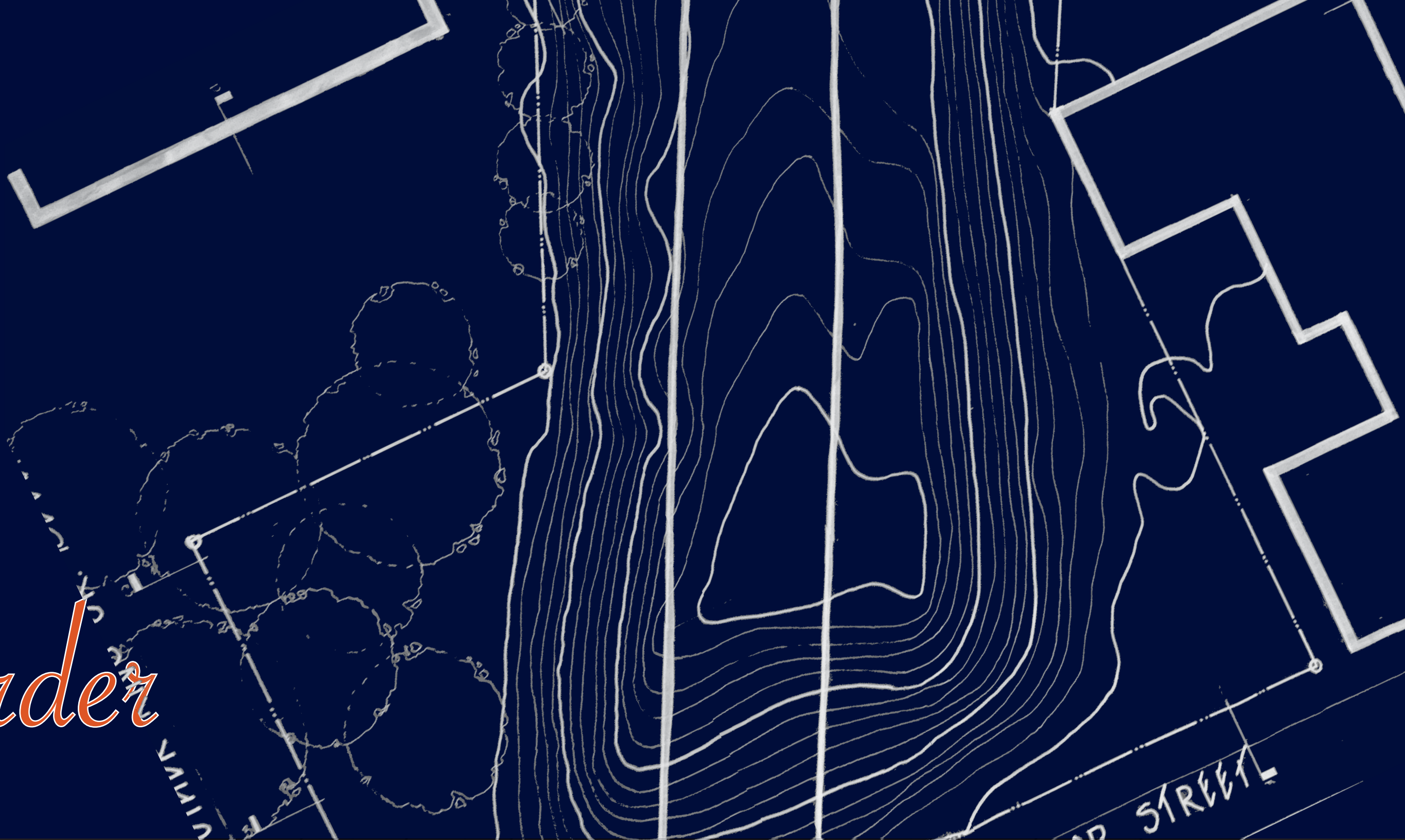


Architectural
Form,
Space,
and *Order*



An aerial photograph of a city street grid. The streets are light-colored, and the blocks between them are dark. One block in the center-right area is highlighted in a bright orange color. The text 'ASSIGNMENT 2' is overlaid in a light blue, sans-serif font with a drop shadow, positioned above the word 'Concepts' which is in a larger, blue, cursive font.

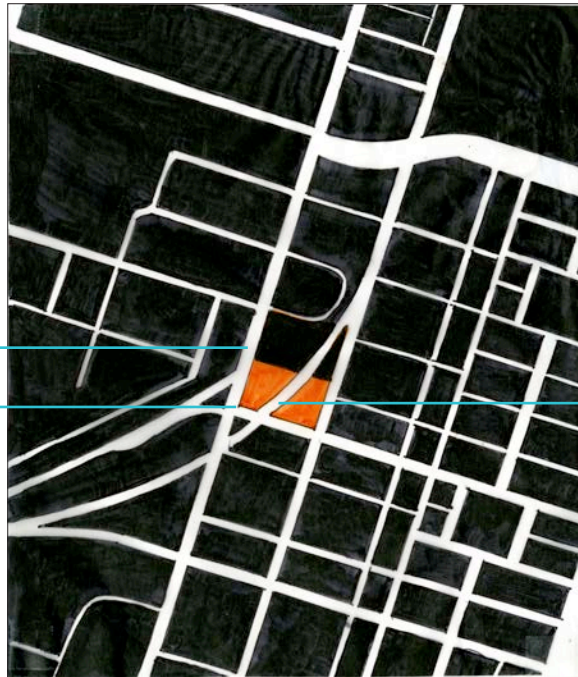
ASSIGNMENT 2

Concepts

Site Location

Martin Luther King
Jr. Blvd.

Taylor Street



I-16 Overpass leading
to Montgomery Street



Site Zones

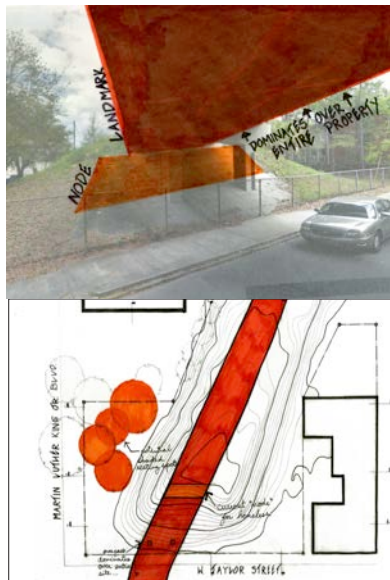
The site shown to the right depicts the different site zones.

Zone A is the most public zone being right off of MLK. Zone B is more private and secluded from people because of its location between the overpass and the business building on Montgomery. Finally, Zone C is the overpass that currently dominated the site overall.



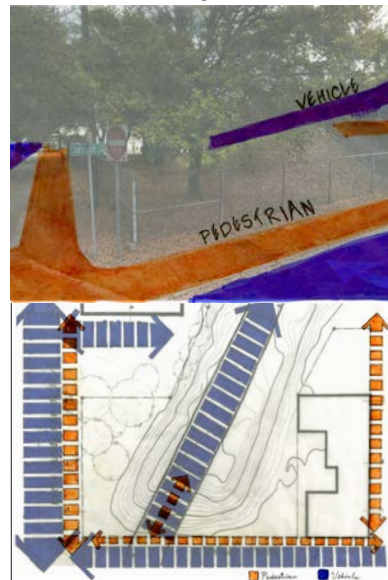
2D Site Analysis

The biggest existing landmark that dominates the site is the I-16 overpass and the node is currently the nook under the overpass where the homeless now live.



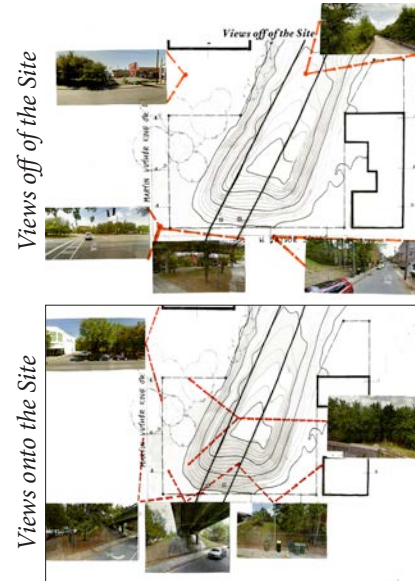
Landmarks & Nodes

The existing circulation happens around the site on the surrounding sidewalks with pedestrians, and then on MLK Blvd, Taylor Street, and I-16 over and through the site.



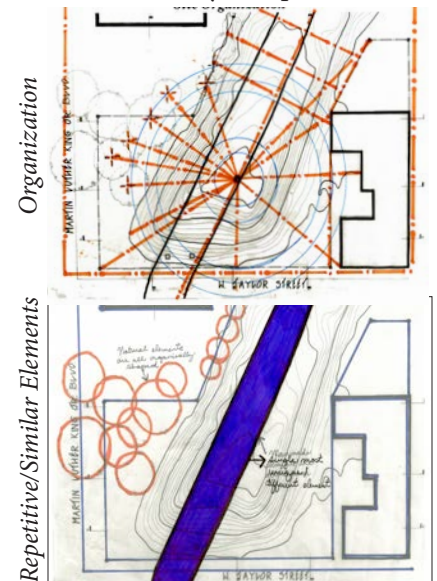
Site Circulation

To get an idea of what is surrounding the site, the views, and what it currently looks like on the site, I collected several key views of these situations.



Views Off/On the Site

The site shows a significant amount of patterns through the organization of the elements and also through the repetitiveness of the topography even with the solitary overpass.



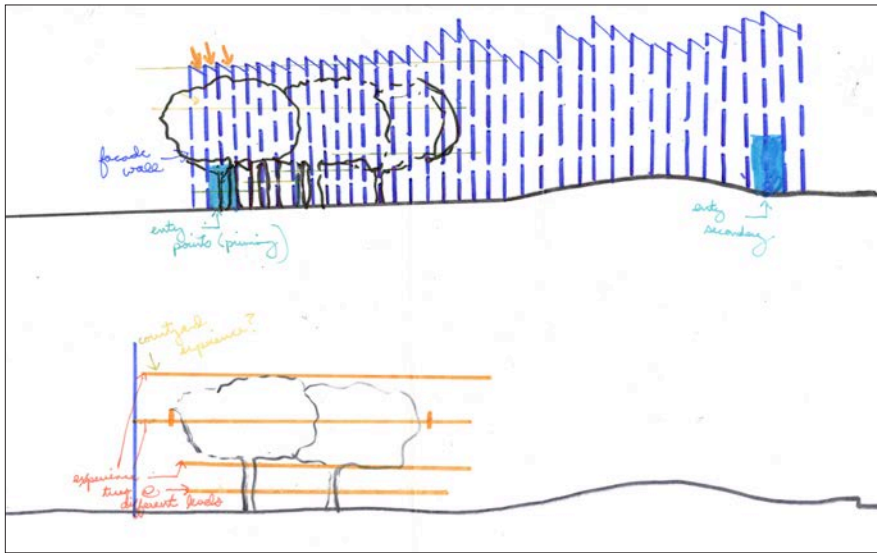
Site Patterns



Assignment 3

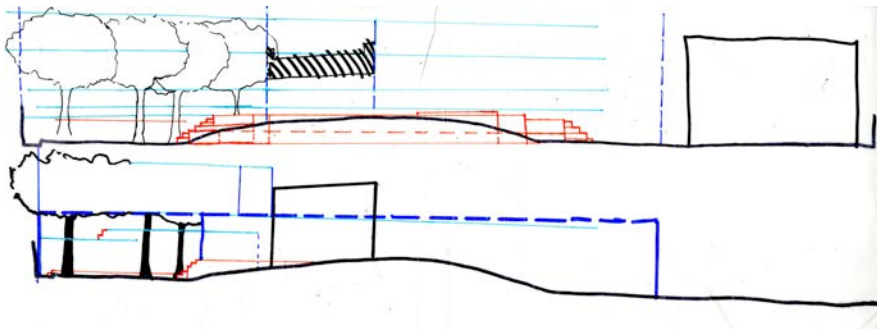
CONCEPTUAL
DESIGN

Design Exploration

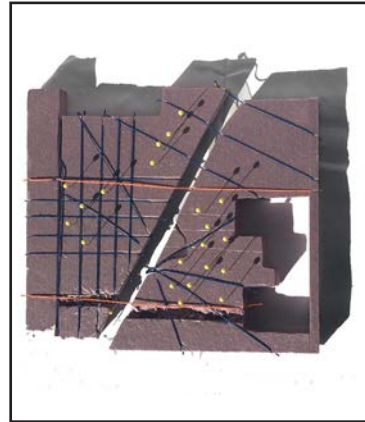
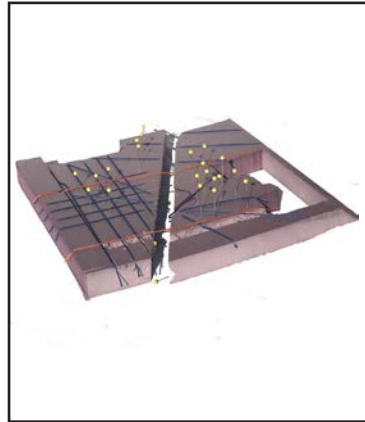
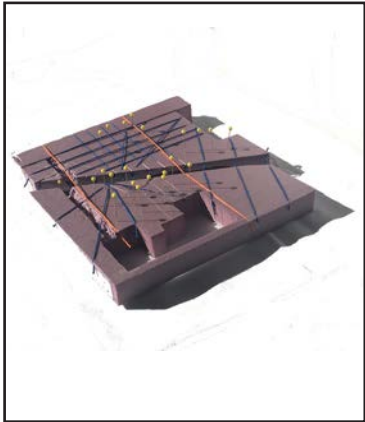


In these rough sketches I explored the idea of experiencing the site at different levels both horizontally and vertically.

I also wanted to tackle the task of the hill on the site that supports the I-16 overpass by seeing how I could add to it or carve into it.

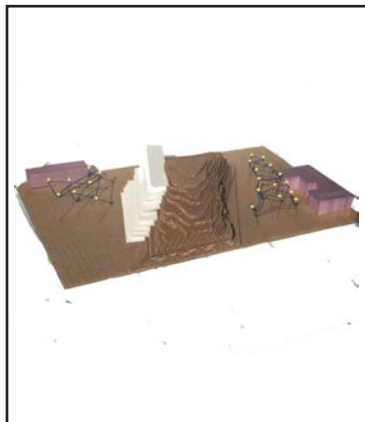


Exploitative Models



Organization

This model shows the connection of the different organizations within the site, from the grid to the radial affect of the hill.



Layering Model

Here I wanted to see what layers would look like in the contours of the hillside.

Assignment 3 Conclusion

To understand is to perceive patterns.

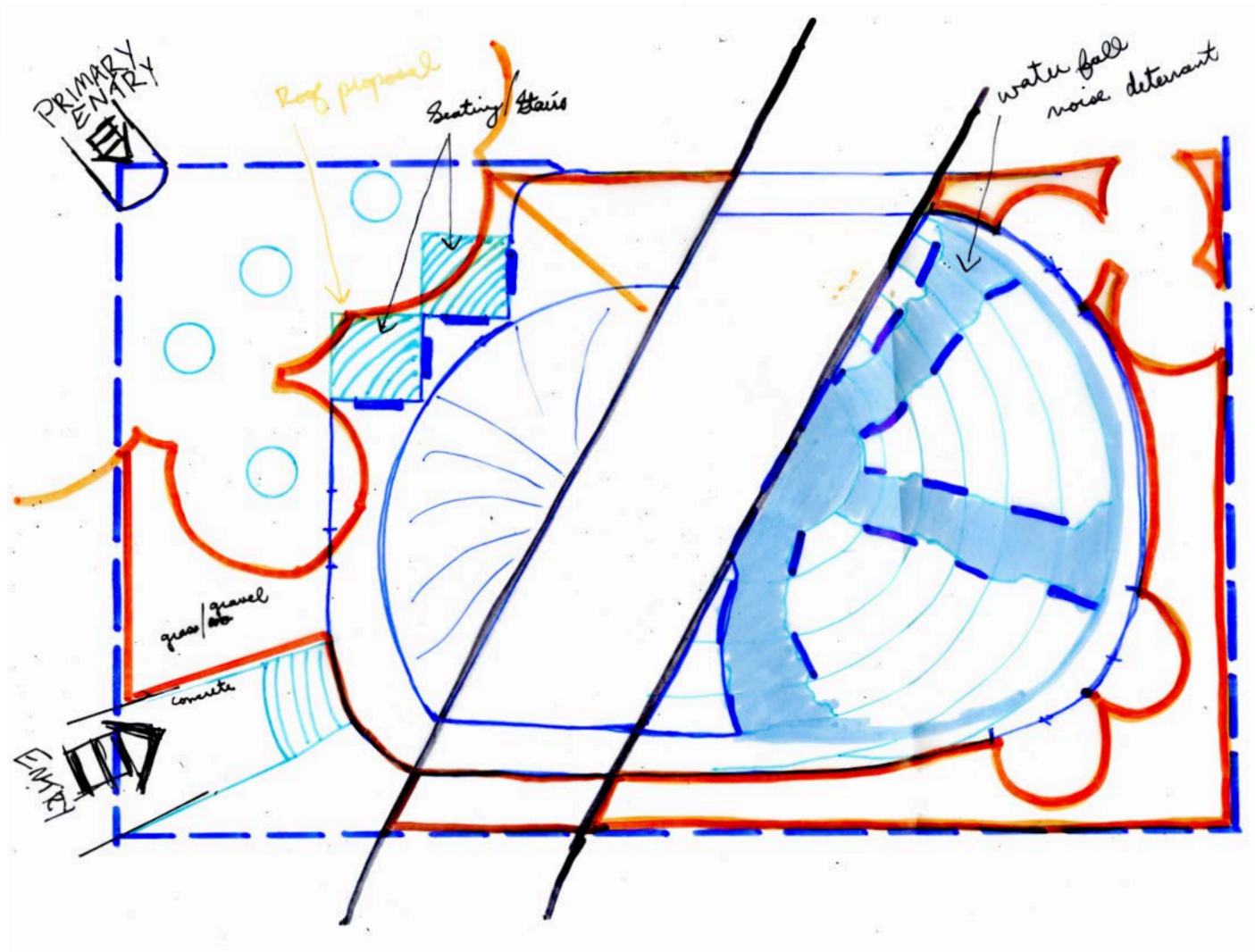
- Sir Isaiah Berlin



SCHEMATIC
Assignment 4
DESIGN

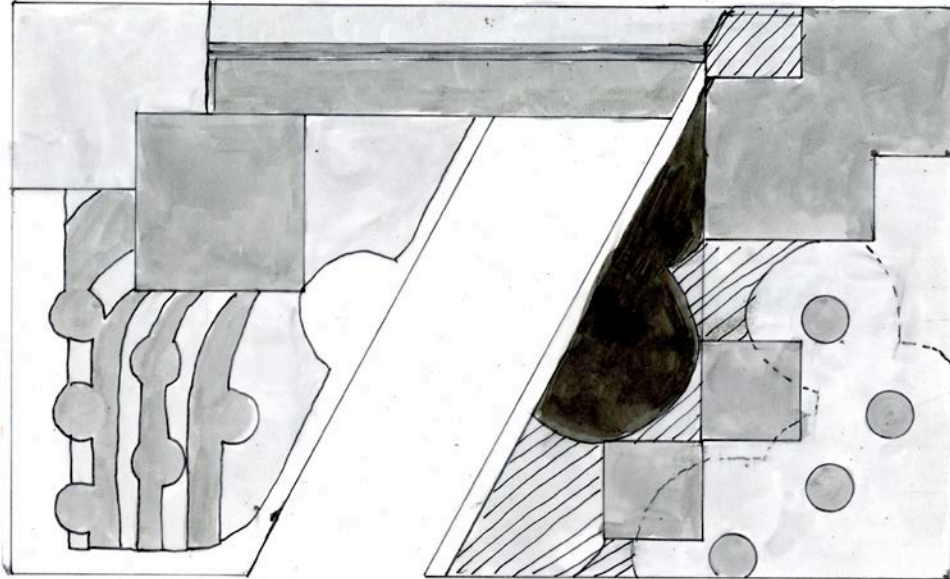
The background features a hand-drawn schematic of a mechanical assembly. On the left, there is a vertical component with a series of rounded, bulbous protrusions. To its right is a large, dark, semi-circular or conical part. Further right, there are several rectangular blocks, some with diagonal hatching, and a series of circles arranged in a row, possibly representing a shaft or a series of rollers. The drawing uses various line styles and shading to represent different materials and components.

Initial Plan

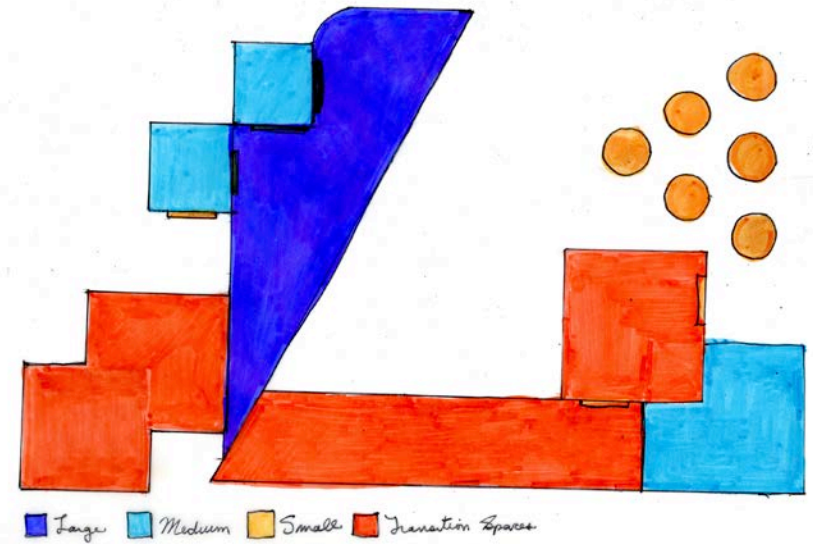


Meditation Spaces Diagrams

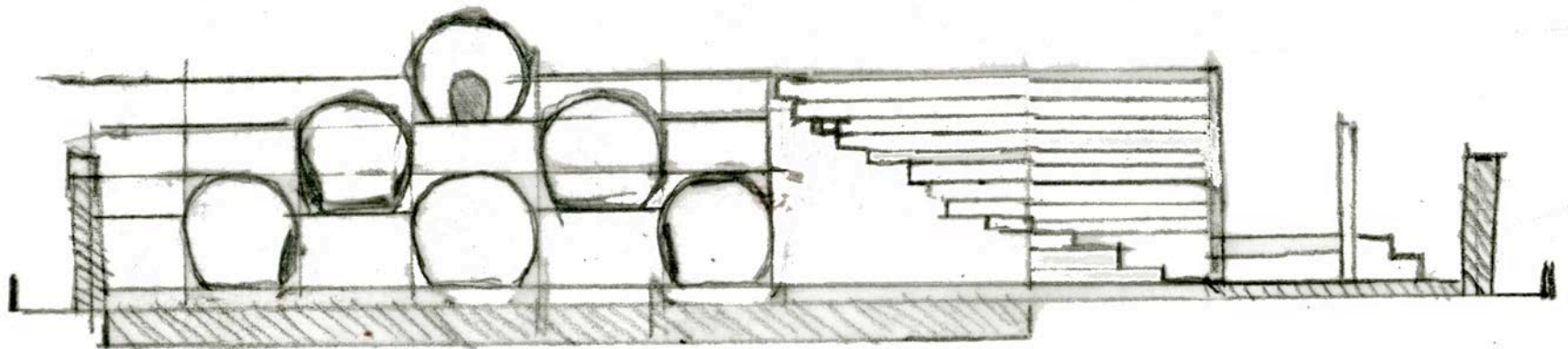
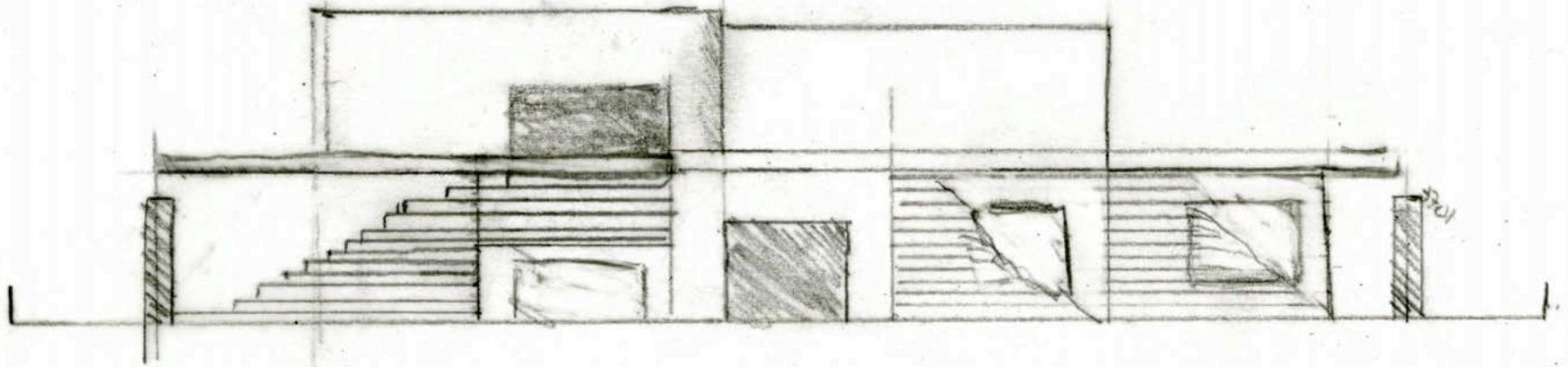
Parti Plan



Space Parti



Proposal Section Visualization



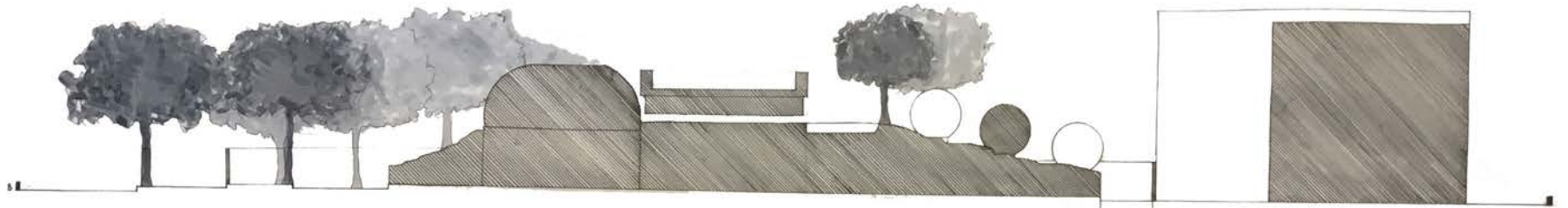
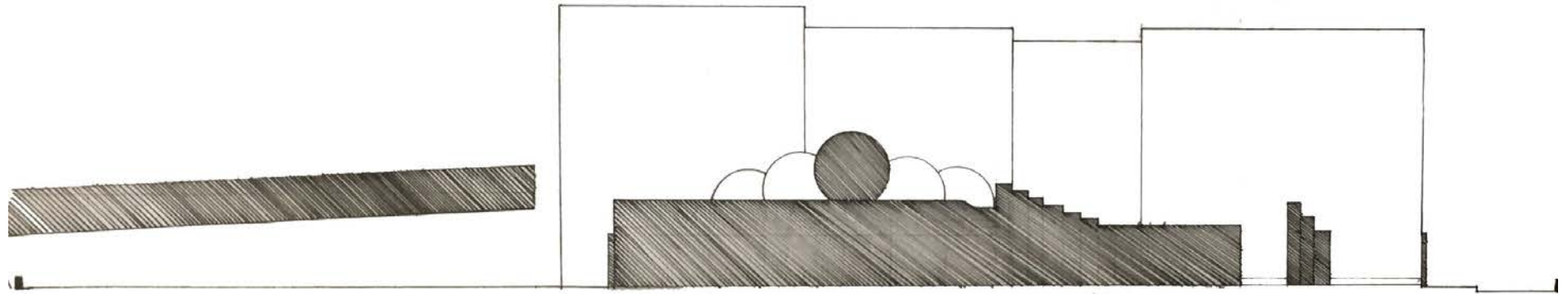
The background is a detailed architectural drawing in black ink on a white background. It features a grid of lines, several rows of circles, and various geometric shapes like rectangles and squares. Some lines are solid, while others are dashed. The drawing appears to be a technical sketch of a building's layout or a decorative pattern.

ASSIGNMENT 5

*Design
Development*

W. TAYLOR STREET

Meditation Site Sections

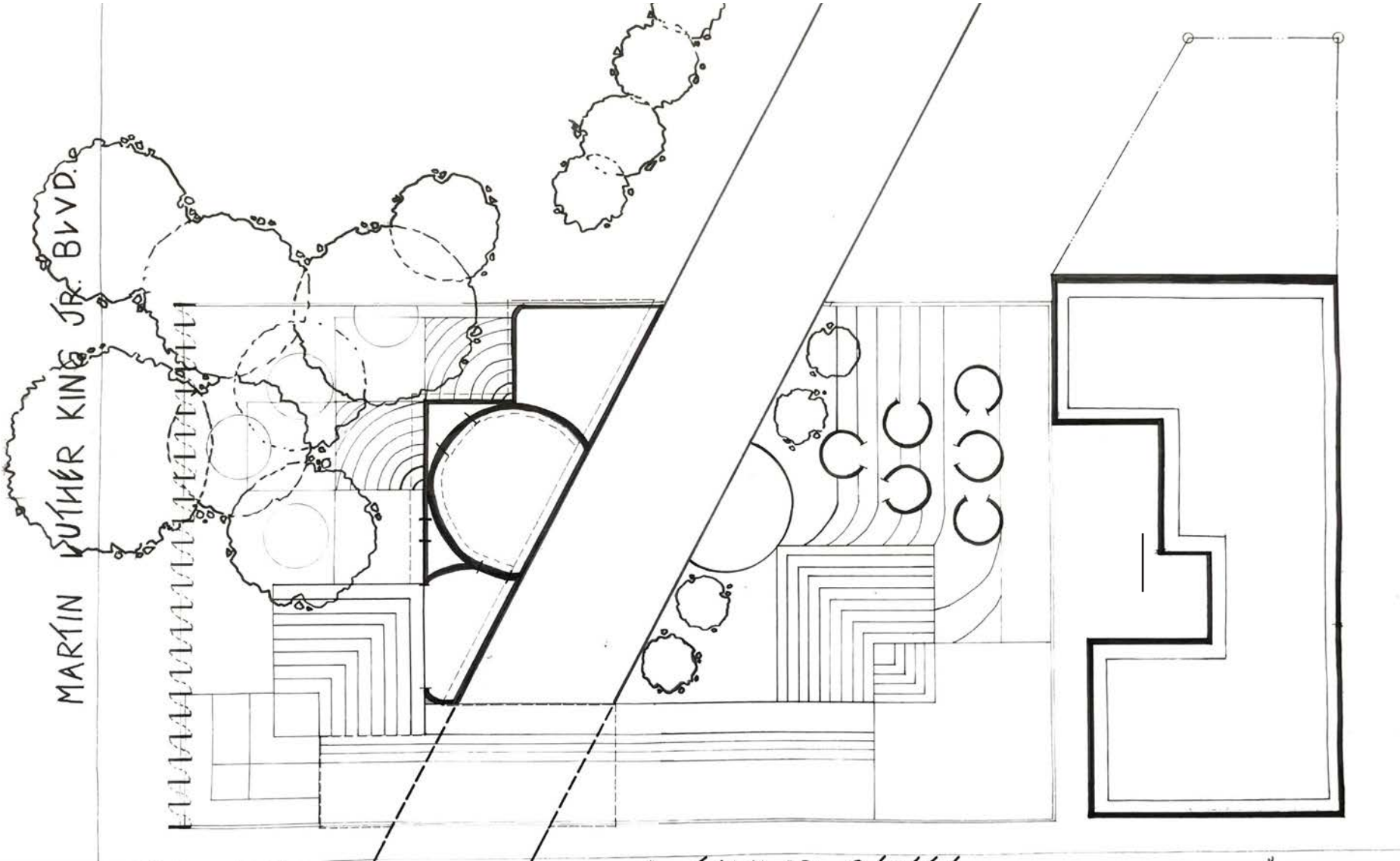


Hand Drafted by Alexandra Dedinsky



Alexandra Dedinsky
(985) 373-1000
amedinsky@gmail.com
Interior Design Student

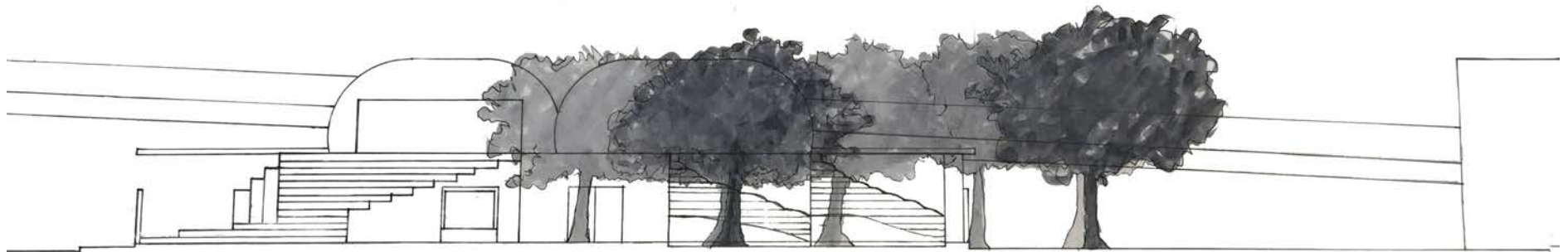
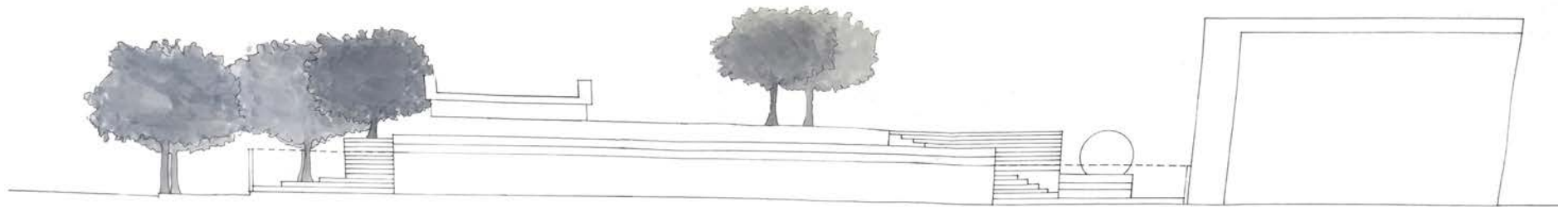
Meditation Site Plan



Hand Drafted by Alexandra Dedinsky



Meditation Site Elevations



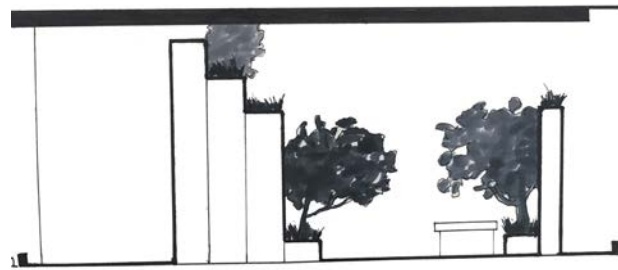
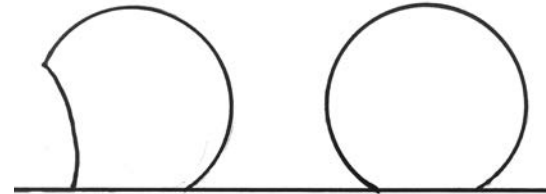
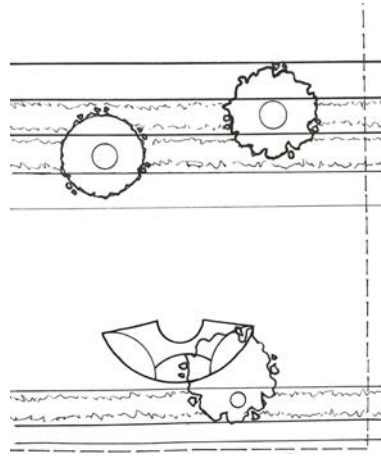
Hand Drafted by Alexandra Dedinsky



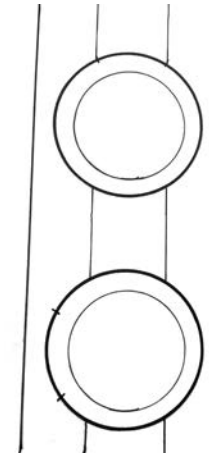
Alexandra Dedinsky
(985) 373-1000
amdedinsky@gmail.com
Interior Design Student

Ed Folly Model Site Details

Small Space

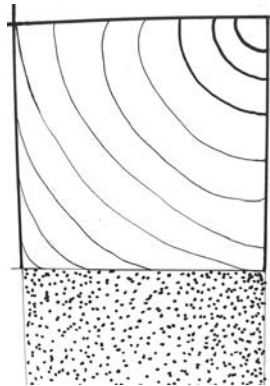
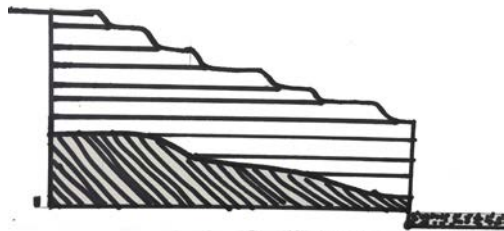


Tunnel Transition



Site Details

Medium Space



Wall to Garden
Transition



Final Site Model





Alexandra Dedinsky
(985) 373-1000
amdedinsky@gmail.com
Interior Design Student