



EXPLORATION

of the

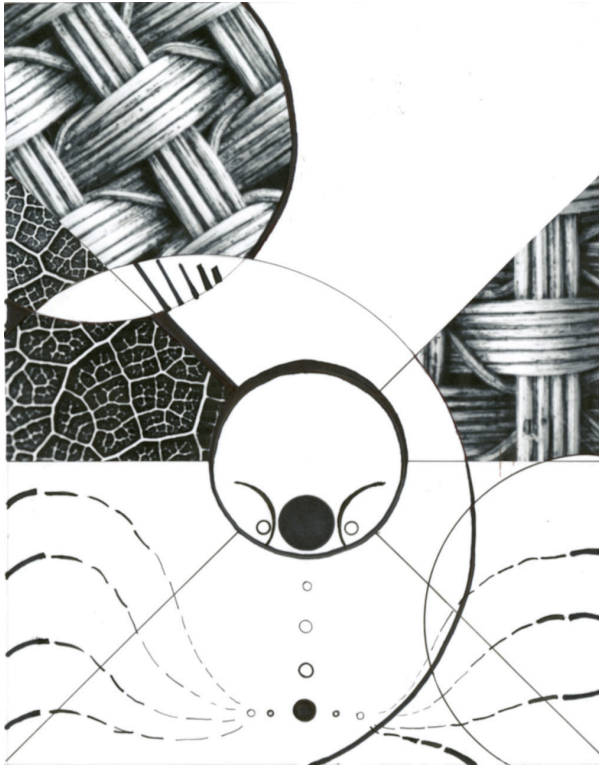
PRINCIPLES and ELEMENTS

of FORM,

SPACE,

and ORDER

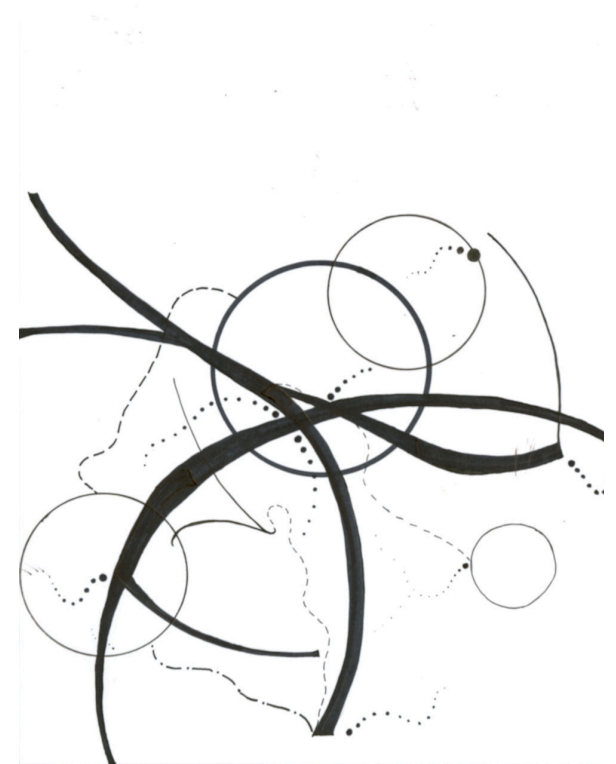
Principles of Form, Space, Order



Destination



Congregation



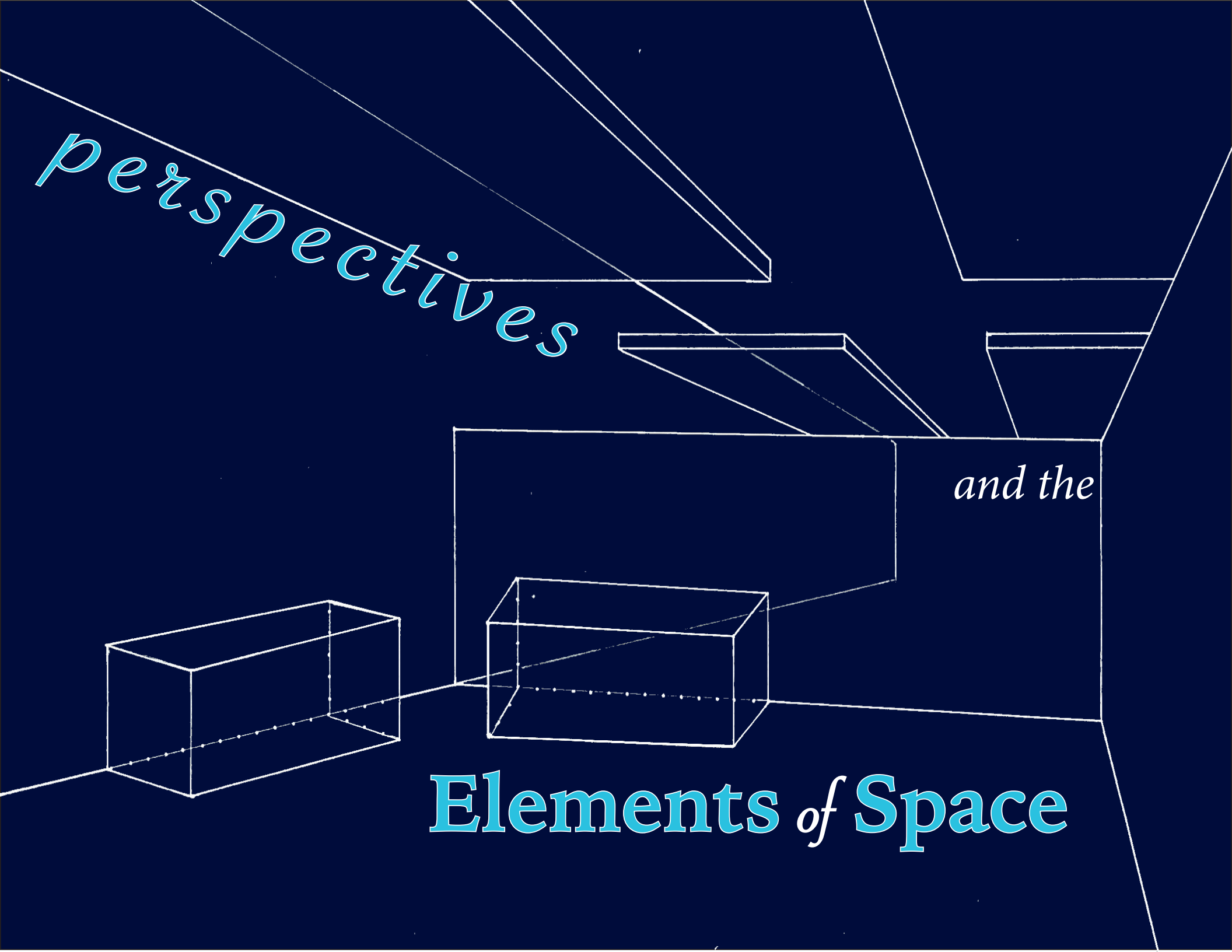
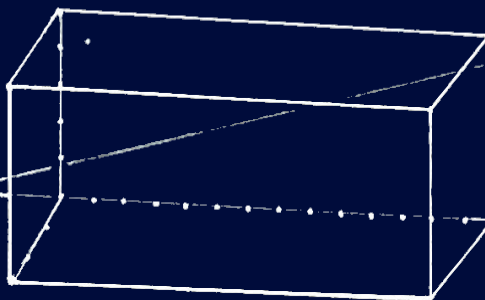
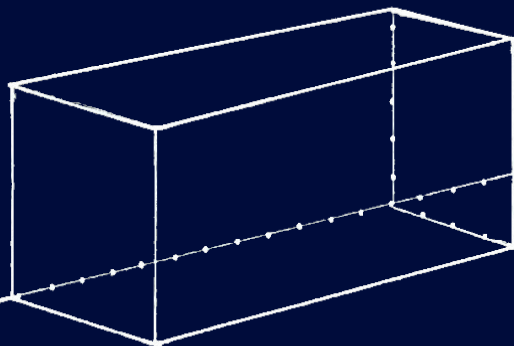
Divergence

Inspired by the lobby of Walt Disney World's Animal Kingdom Lodge

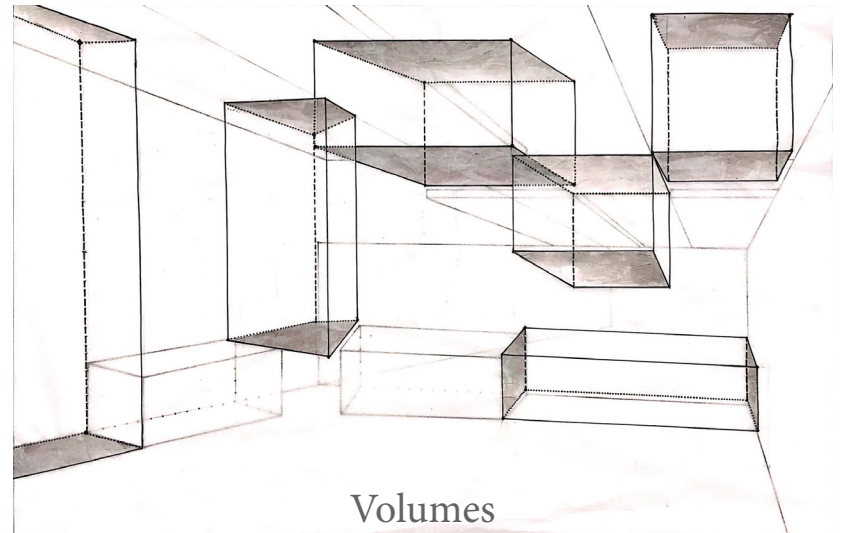
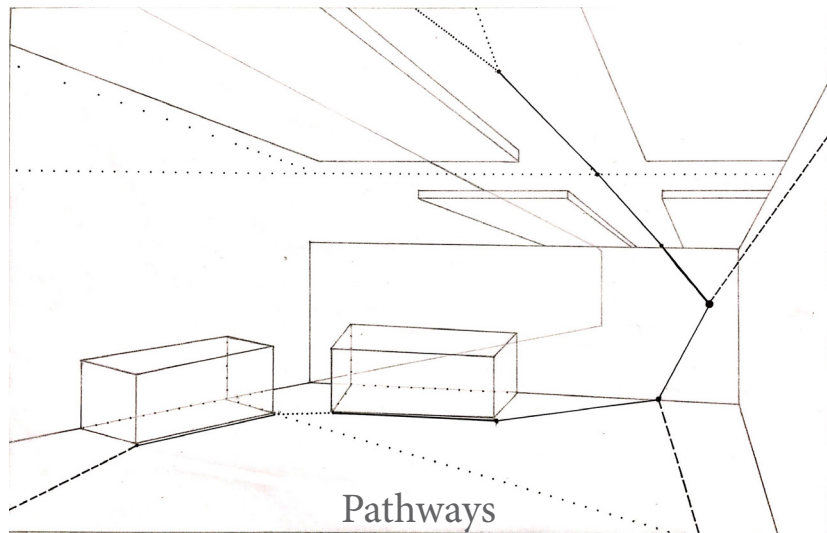
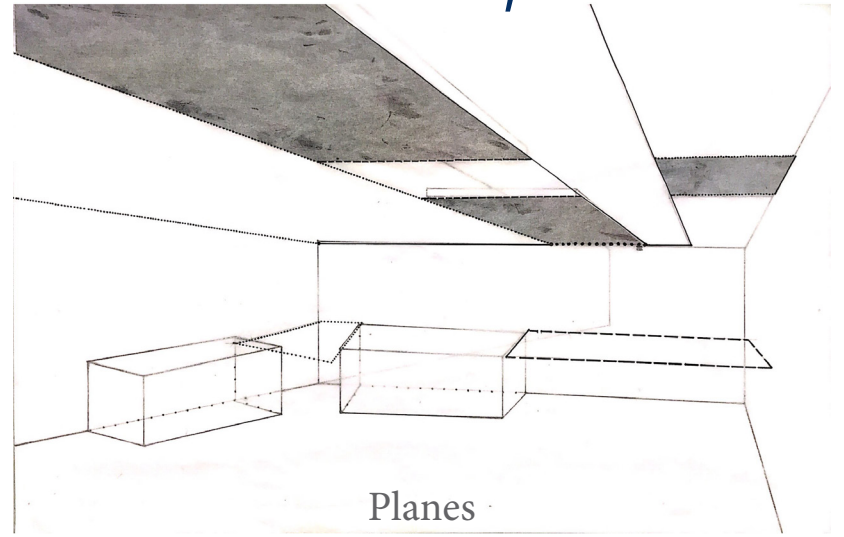
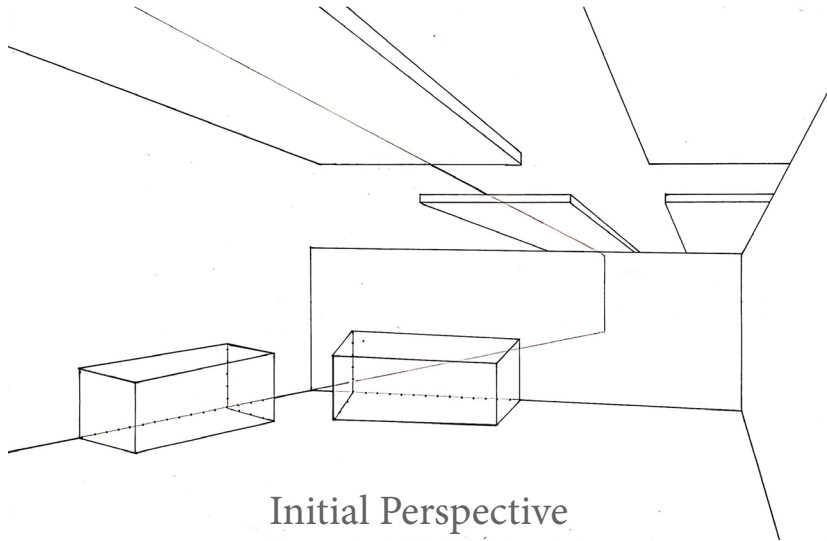
perspectives

and the

Elements of Space



Perspectives



Diagrammatic

Analysis

of

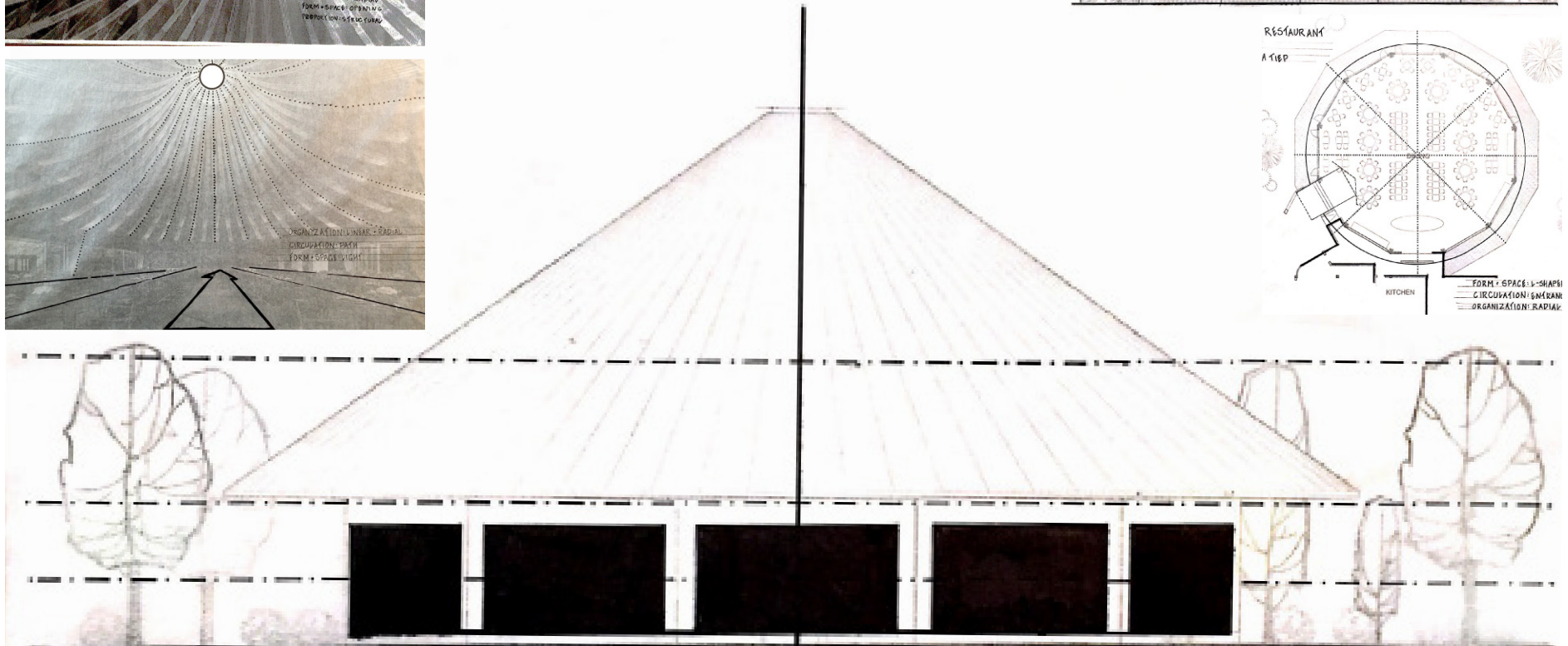
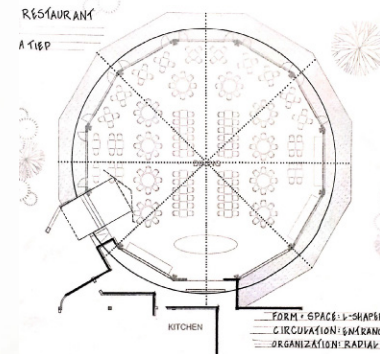
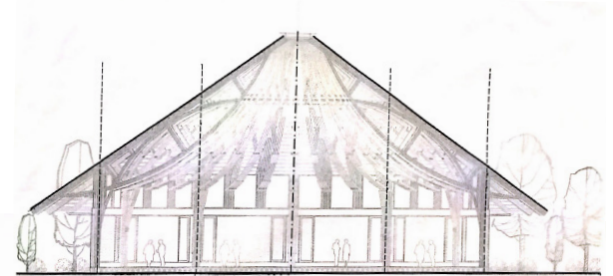
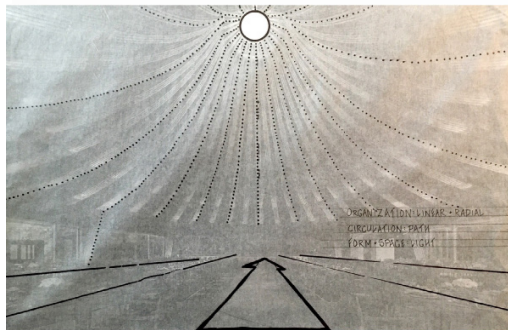
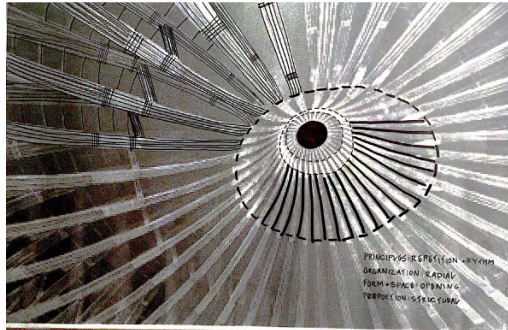
FORM

SPACE

and ORDER

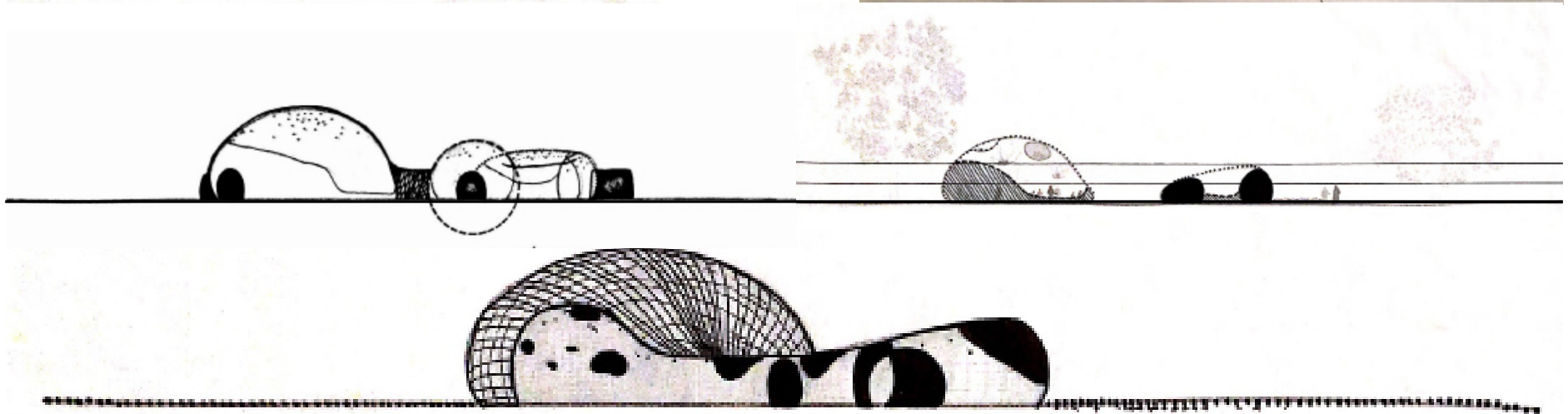
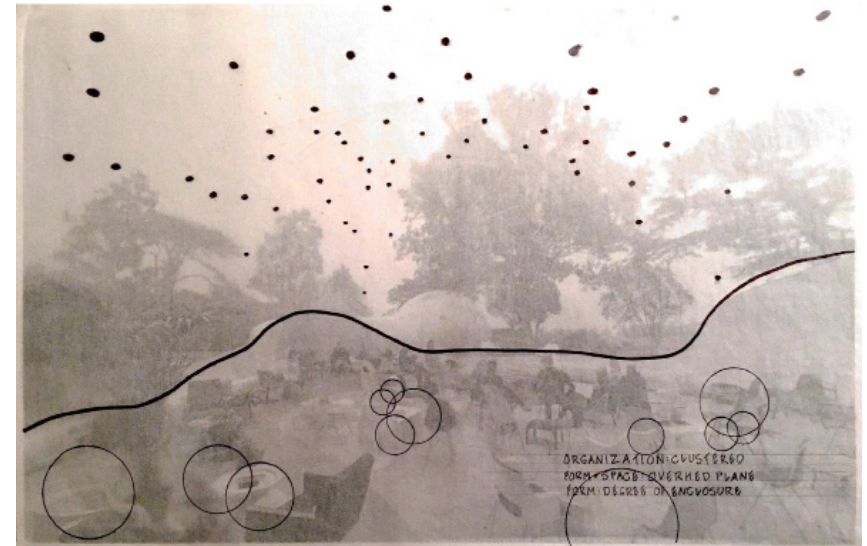
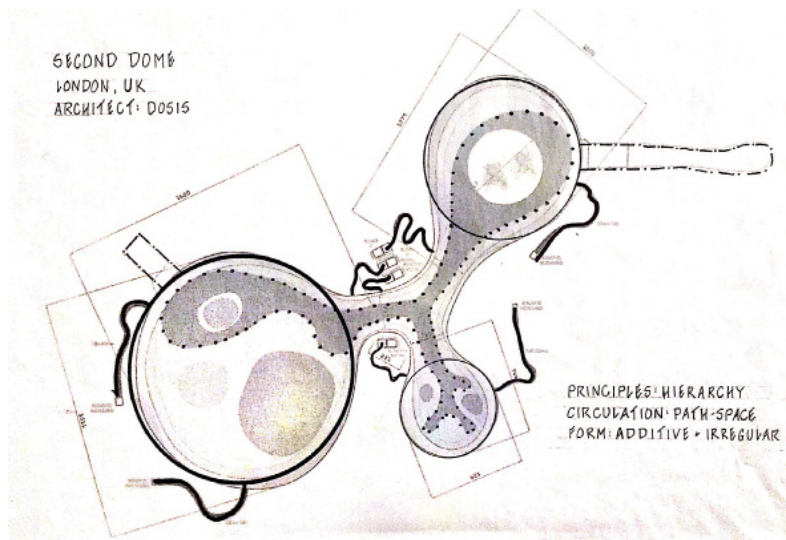
Hoa Binh, Vietnam
Architect: Tran Ba Tiep

Kim Boi Bamboo Restaurant



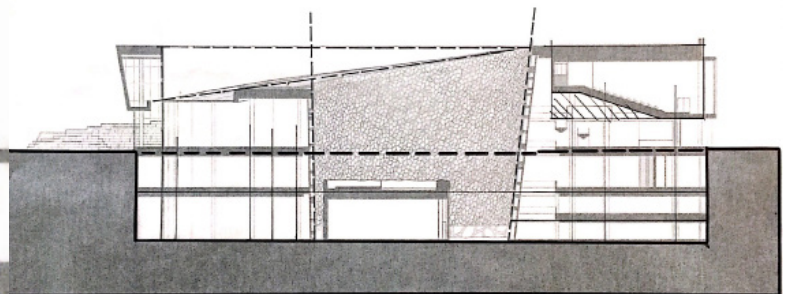
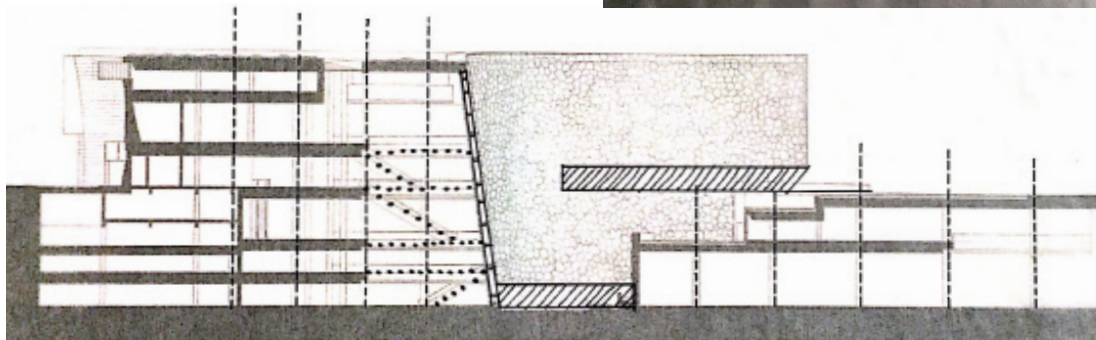
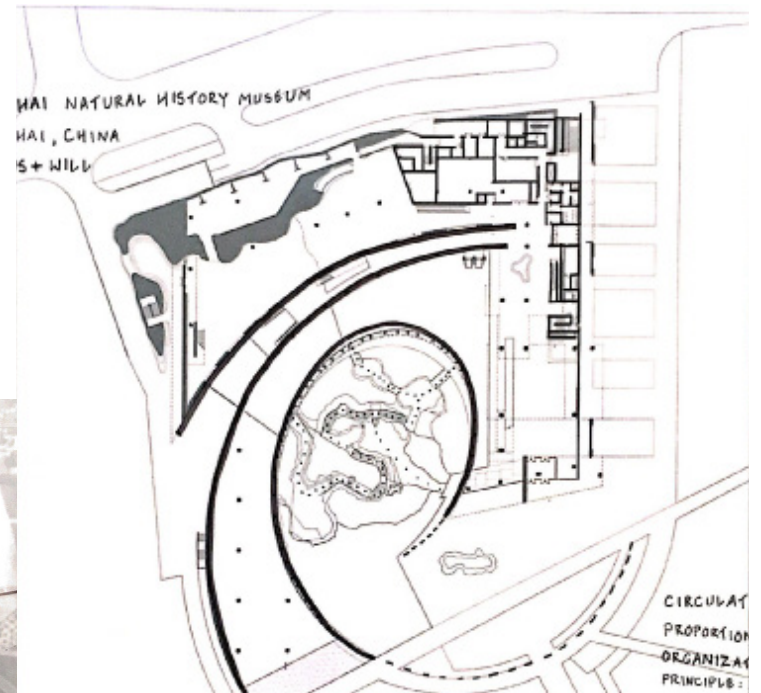
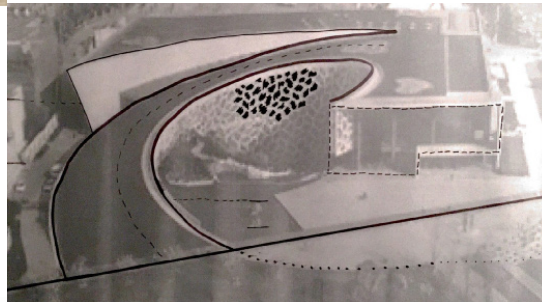
Second Dome

London, United Kingdom
Architect: DOSIS



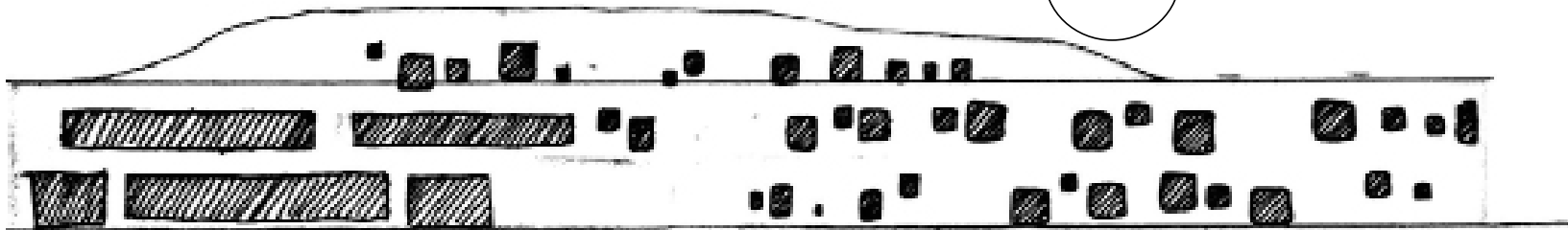
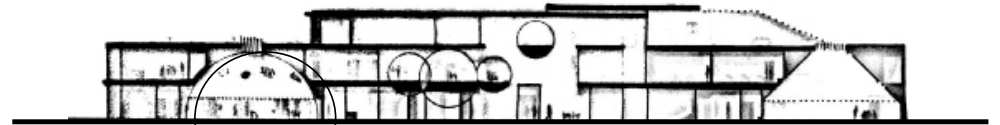
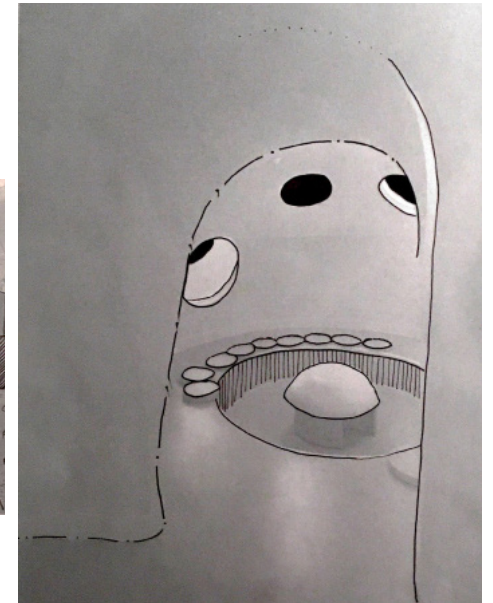
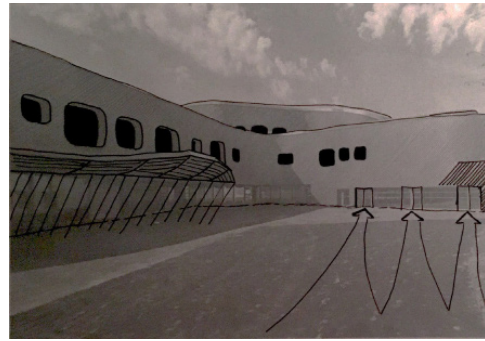
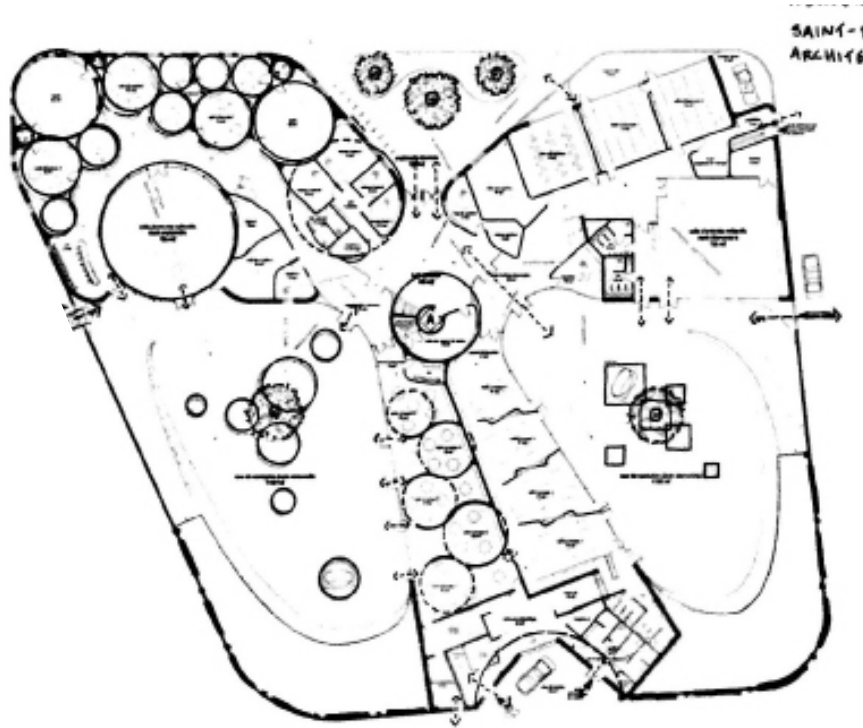
Shanghai, China
Architect: Perkins + Will

Natural History Museum



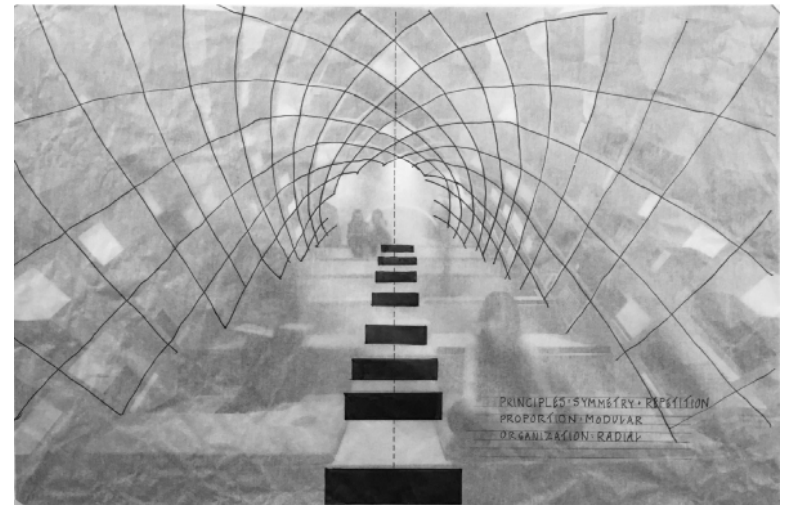
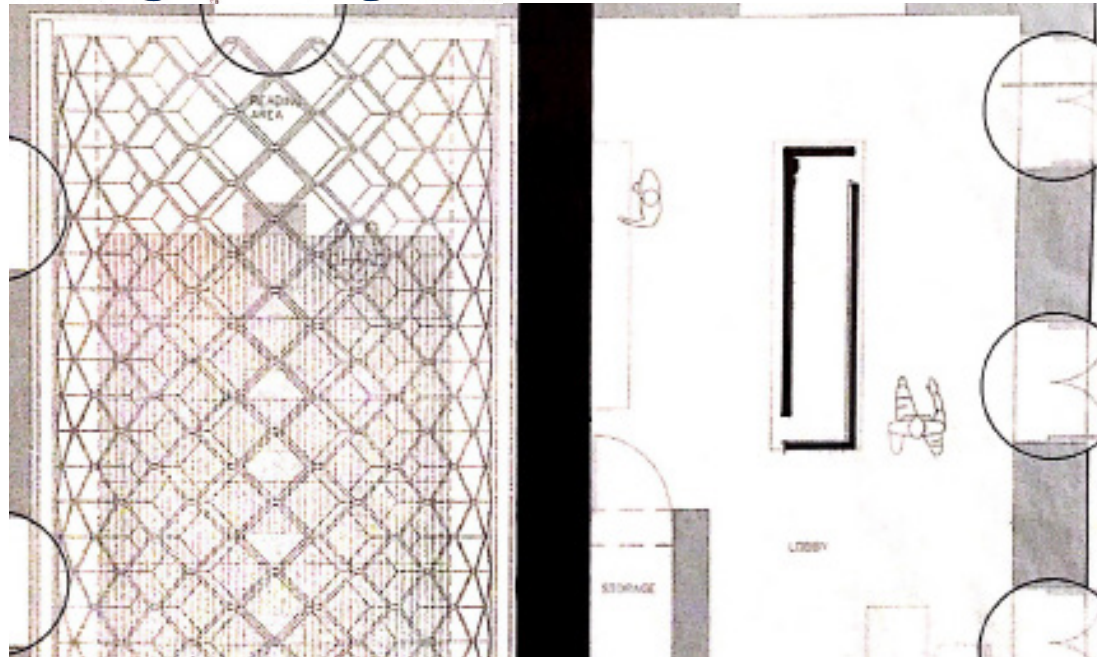
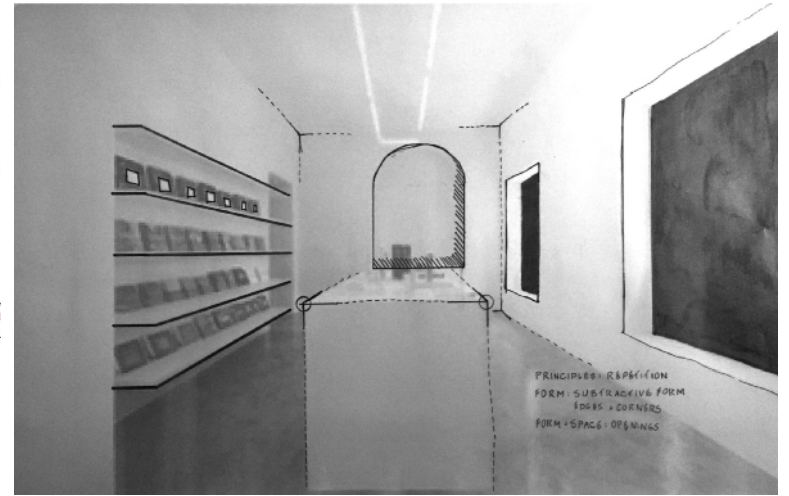
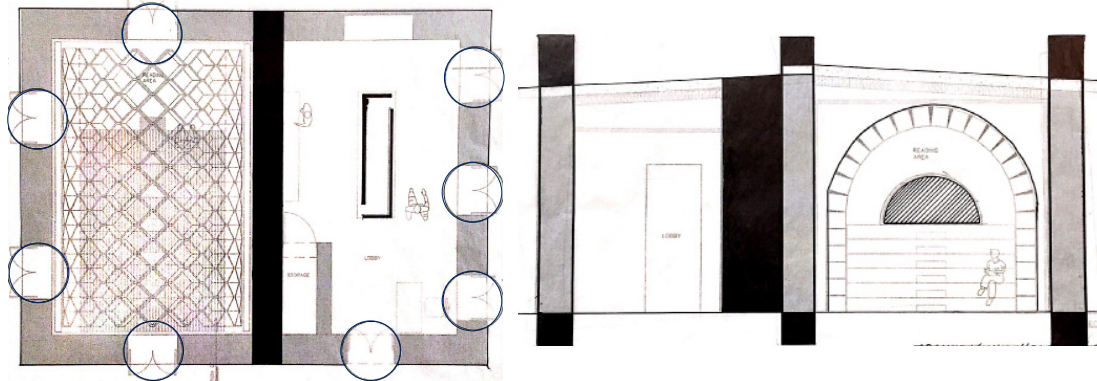
Nursery and Primary School

London, United Kingdom
Architect: DOSIS



Monterey, Mexico
Architect: ANAGRAMA

Conarte Bookstore




APPLYING

Form,

Space,

Order

TO Broughton Street

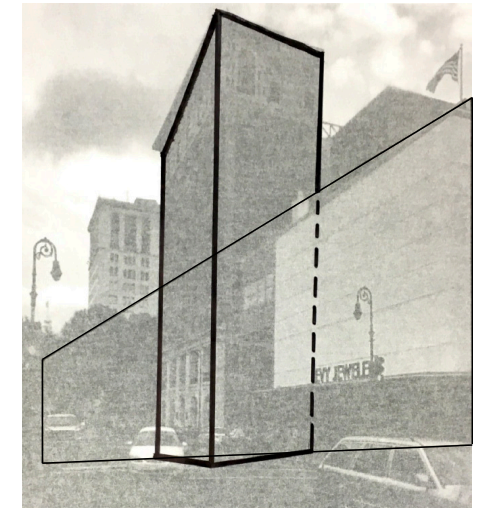
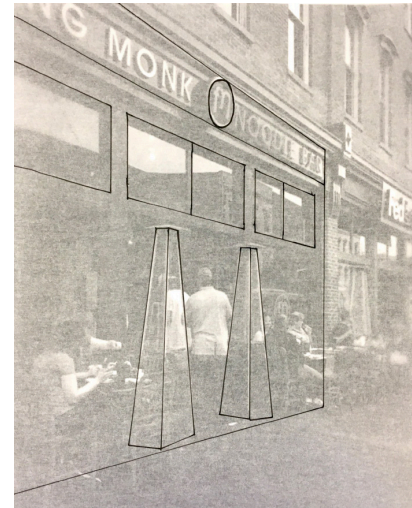
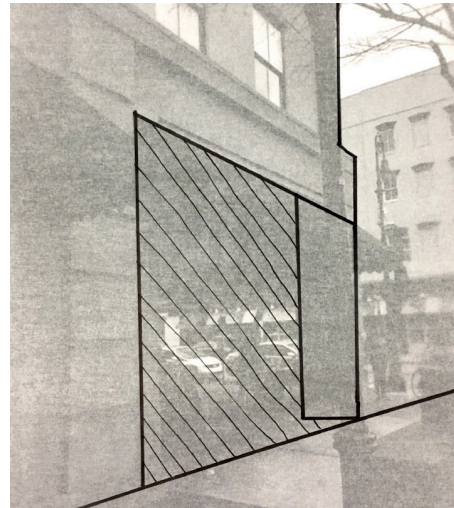
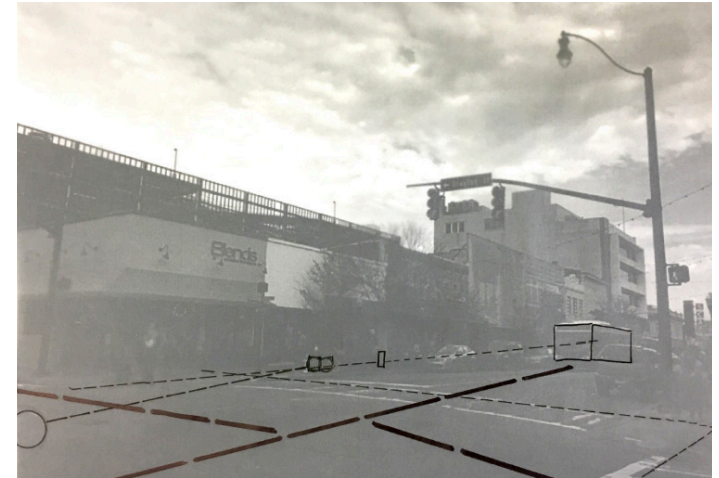
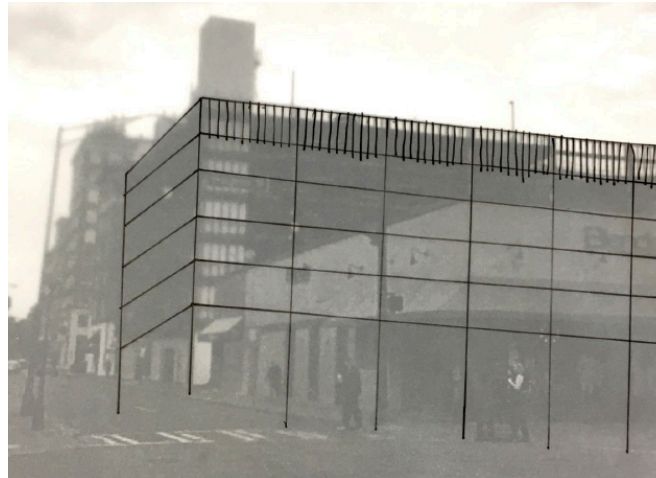


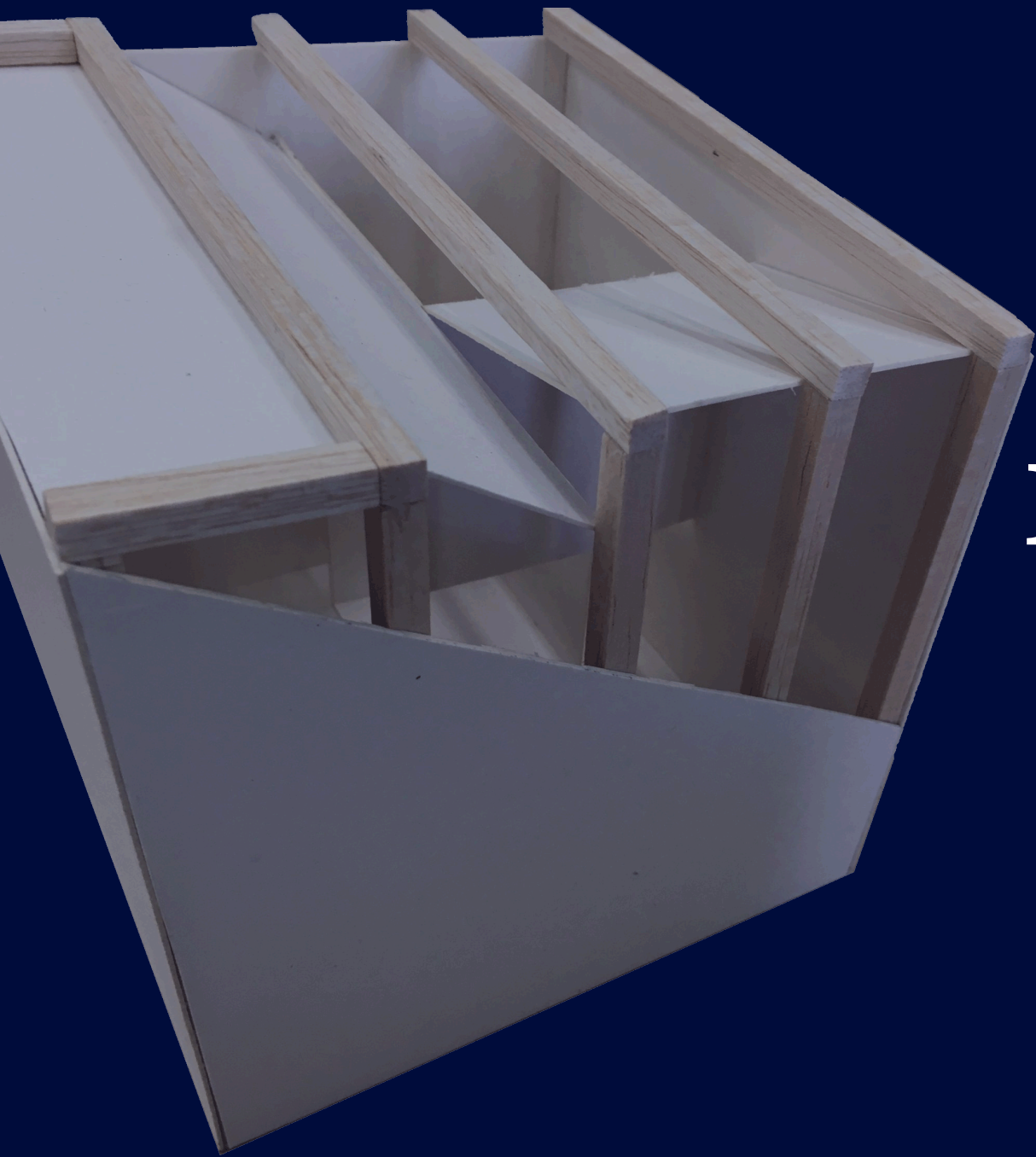
Broughton Street Analysis

Diagrammatic Analysis
of the elements of “Form,
Space, and Order” on
Broughton Street.

Including:

- Repetition
- Mass and Void
- Circulation
- Elemental Shapes to make
up Complex Forms
- Hierarchy
- Proportion





ANALYSIS

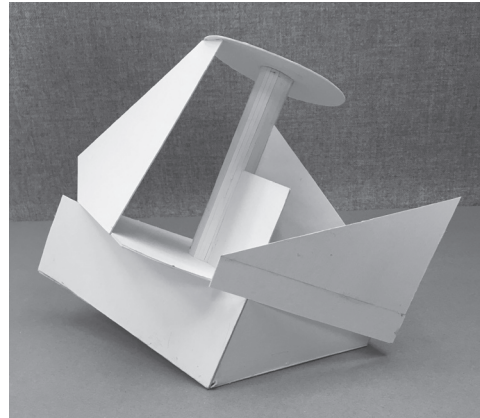
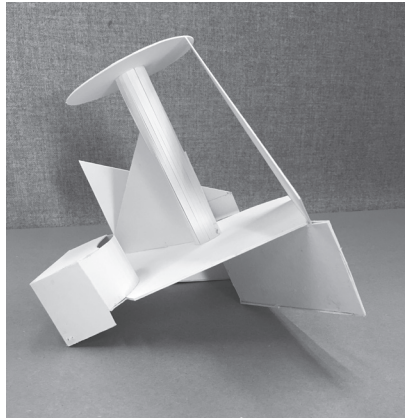
MODELS

Exploring

Organization

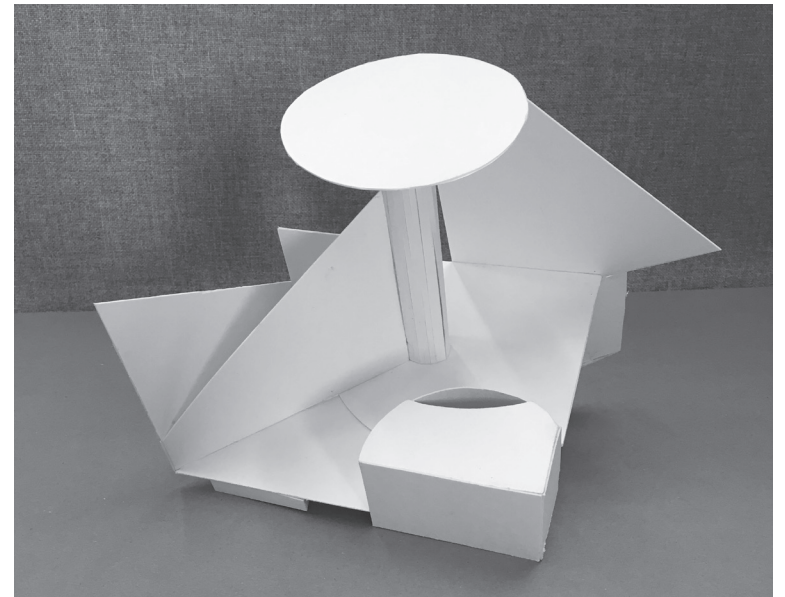
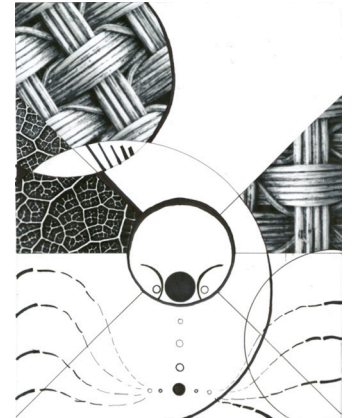
and *Emotion*

3D Analysis Model

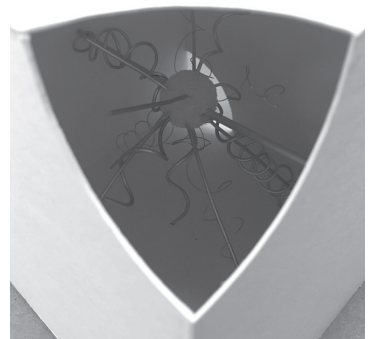
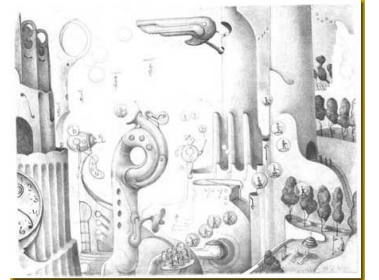
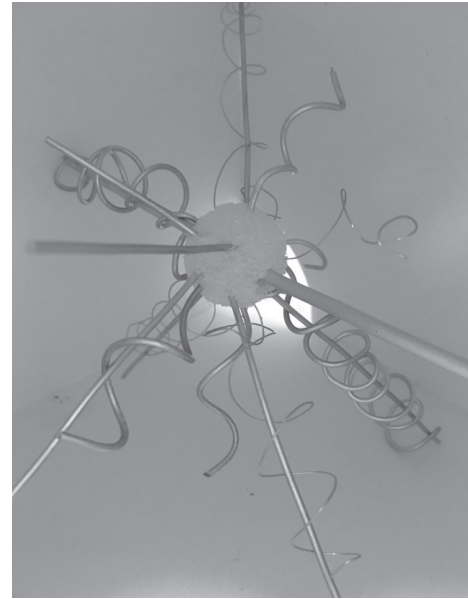
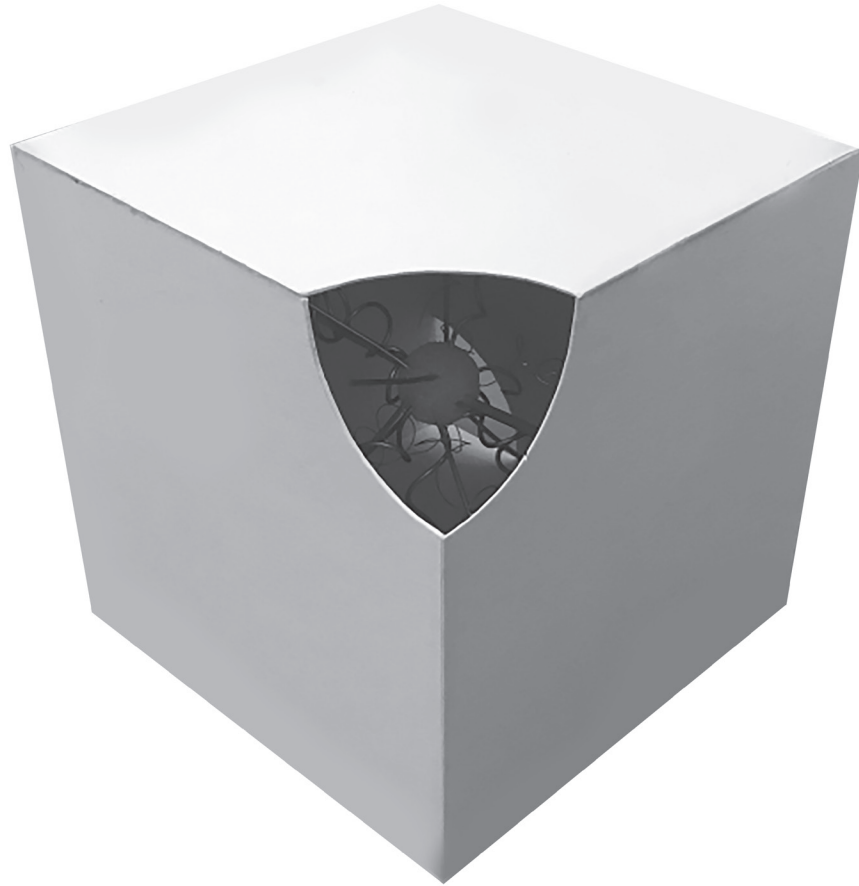


Abstract model based on
destination diagram inspired
from Animal Kingdom Lodge
Lobby in Disney World

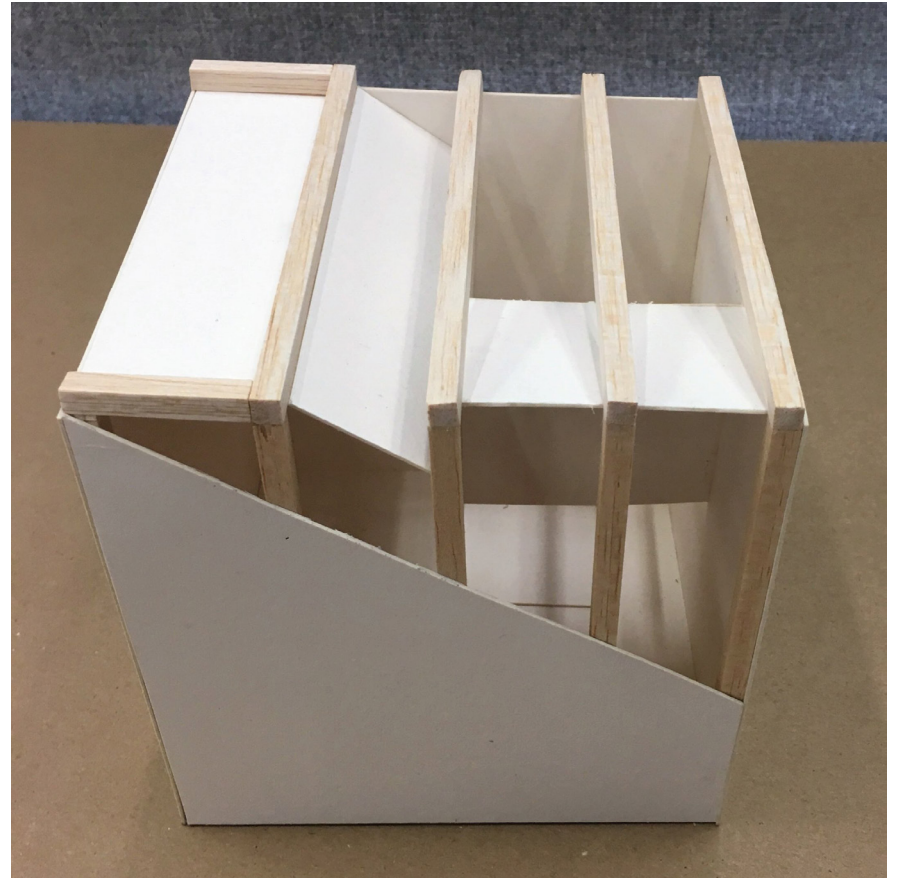
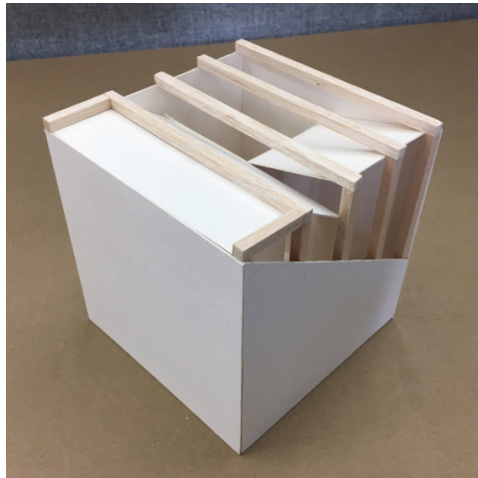
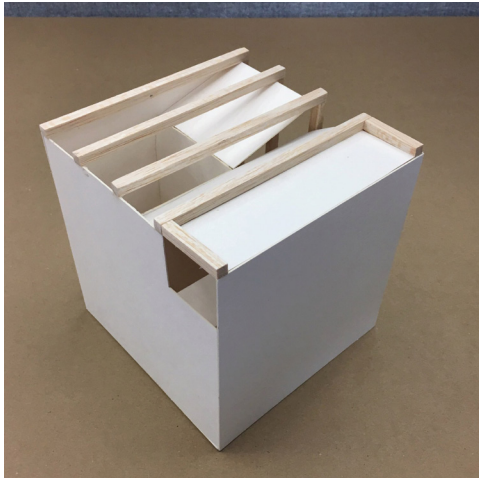
Project 1 Assignment 1 --->



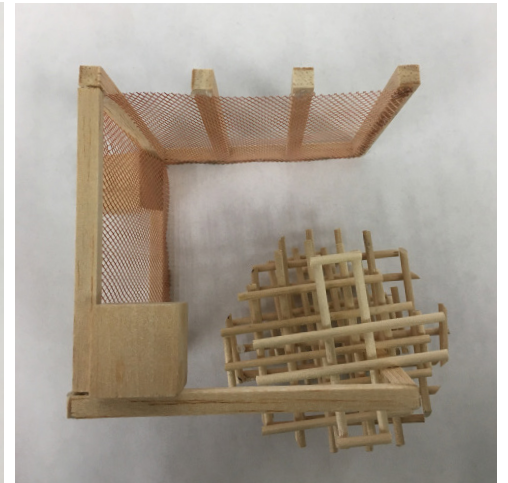
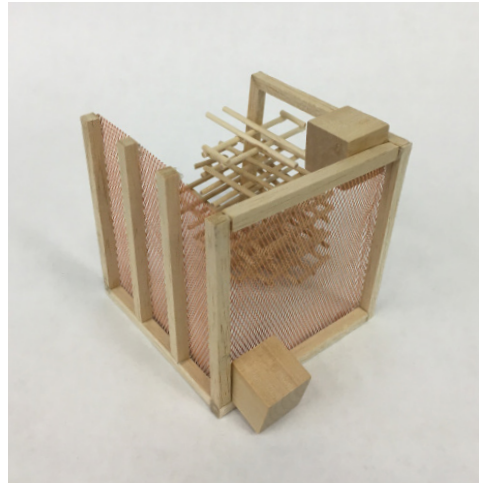
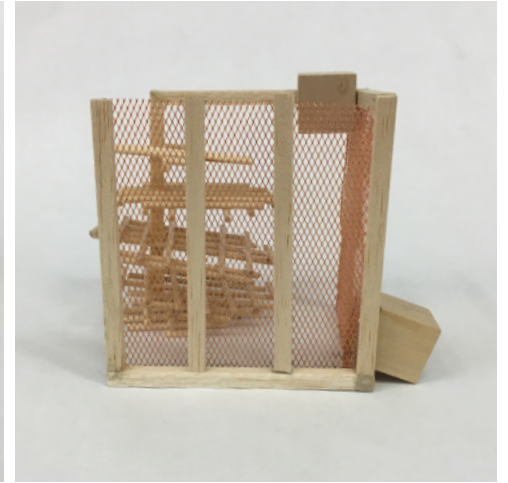
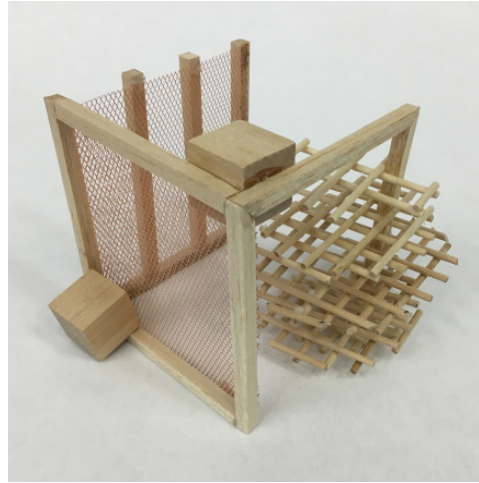
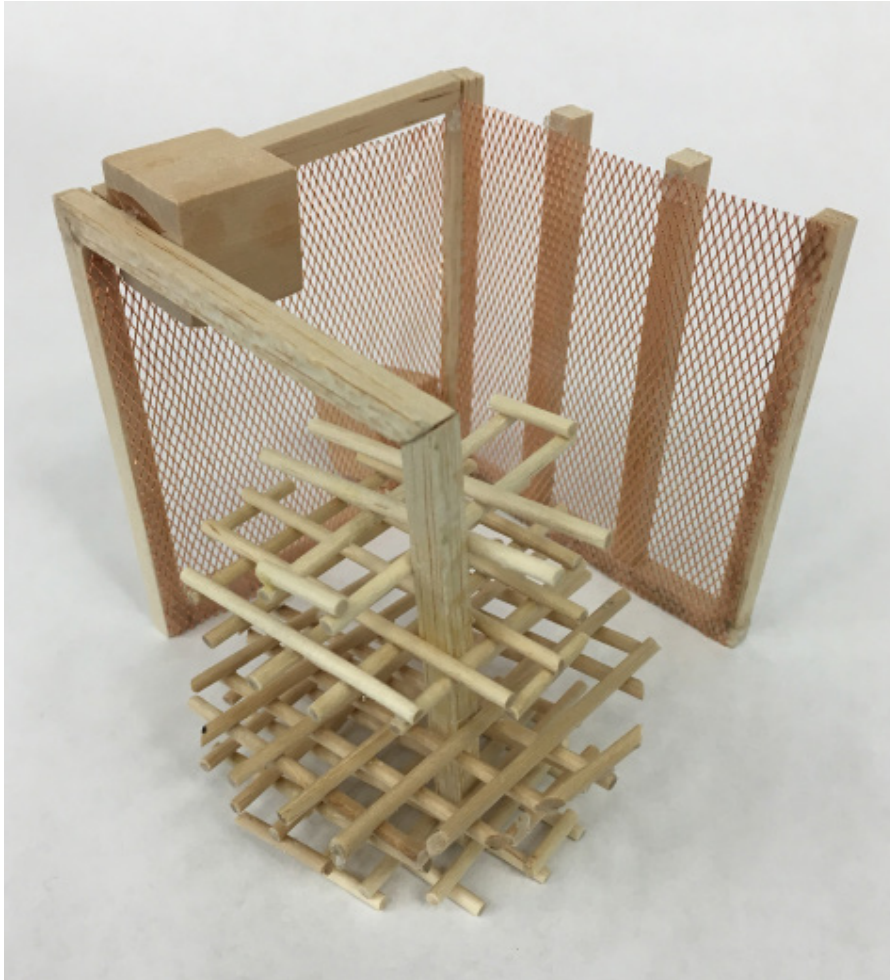
Radial Organization Model



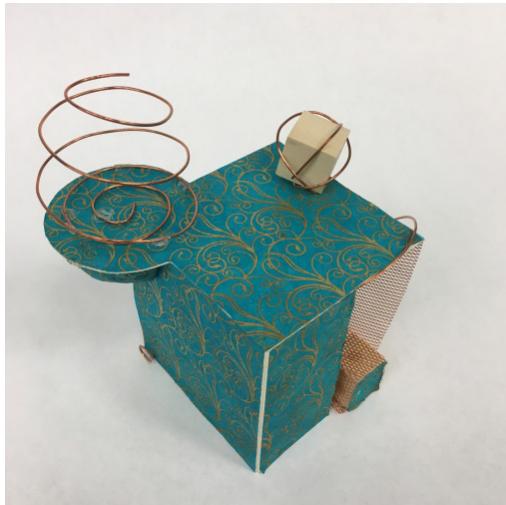
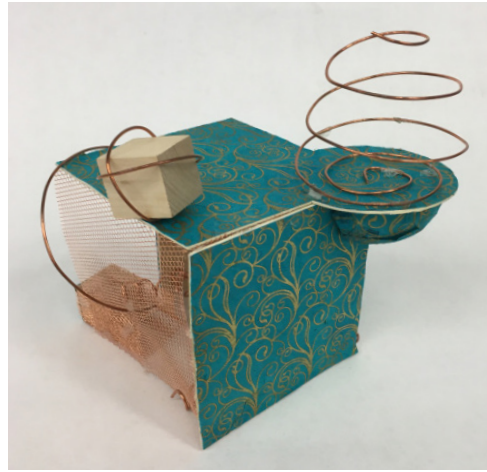
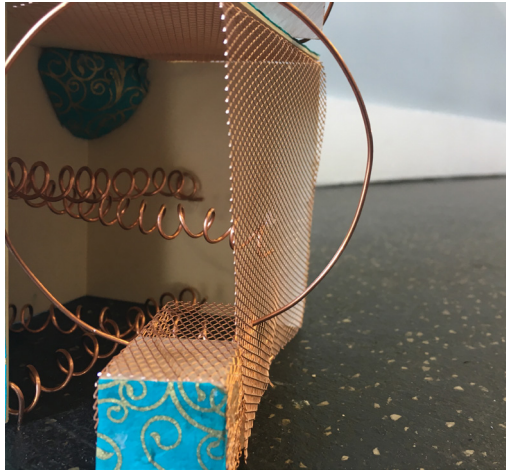
Solitary Model



Interlocking Grid Space



Mysterious Interlocking Space



Escape

to experience life's

Little Wonders

Folly Concept

“My concept for the space is to **create an experience of escape** inspired by the song, ***Little Wonders*** by Rob Thomas.”

- ***Wonder***
- ***Whimsy***
- ***Hope***
- ***Mystery***
- ***Renewal***
- ***Comfort***
- ***Innocence***
- ***Serenity***

My mission for the folly is to create three unique experiences that inspire joy, mystery, and peace derived from the song *Little Wonders*.

I hope to create a space that allows visitors to subconsciously ***escape*** the realities of the outside world and freely enter into a new world where they can enjoy and experience some of life's *little wonders*.



rob
thomas
little wonders

WALT DISNEY
PICTURES PRESENTS
**MEET THE
ROBINSONS**
FROM THE ORIGINAL
WALT DISNEY RECORDS
SOUNDTRACK

The song *Little Wonders* was released in 2007 for Disney's movie, *Meet the Robinsons*.

In the movie this song is the background “happily ever after” song for main character, Lewis ‘Cornelius’ Robinson, who after being an orphan his whole life, finally let go of his past, and found his family.

This song has been an inspiration to me ever since I first hear it. It encourages me to let go of my difficult past, to keep moving forward, and enjoy the beautiful *little wonders* found all around me, everyday.

by Rob Thomas

“Little Wonders”

Let it go

Let it roll right off your shoulder

Don't you know

The hardest part is over

Let it in

Let your clarity define you

In the end

We will only just remember how it
feels

Our lives are made

In these small hours

These little wonders

These twists and turns of fate

Time falls away

But these small hours

These small hours still remain

Let it slide

**Let your troubles fall behind
you**

Let it shine

Until you feel it all around you

And I don't mind

If it's me you need to turn to

We'll get by

*It's the heart that really matters in
the end*

Our lives are made

In these small hours

These little wonders

These twists and turns of fate

Time falls away

But these small hours

These small hours still remain

All of my regret

Will wash away some how

But I can not forget

The way I feel right now

In these small hours

These little wonders

These twists and turns of fate

Time falls away,

but these small hours

These small hours, still remain

They still remain

These little wonders

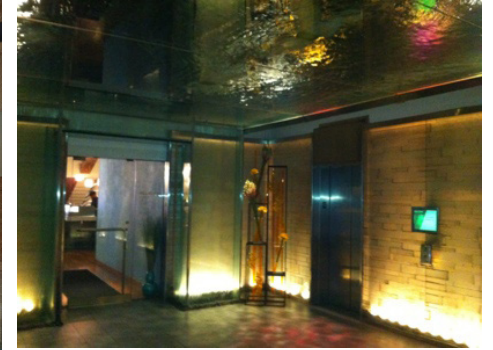
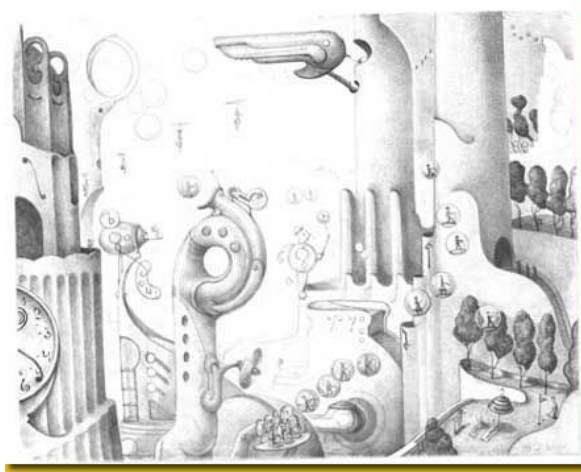
These twists and turns of fate

Time falls away


But these small hours

These little wonders still remain

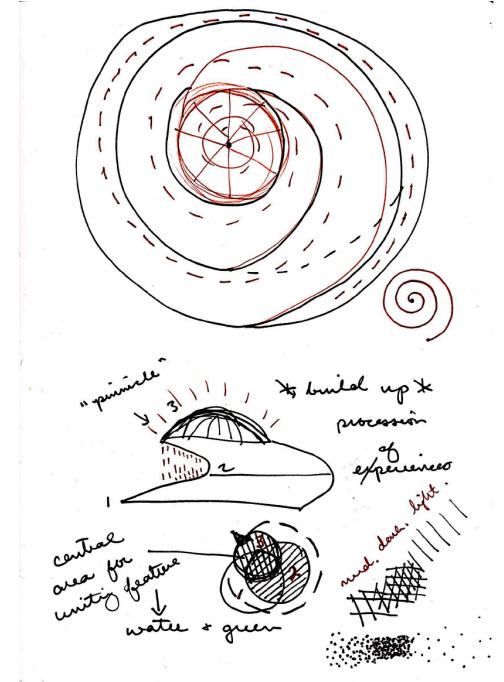
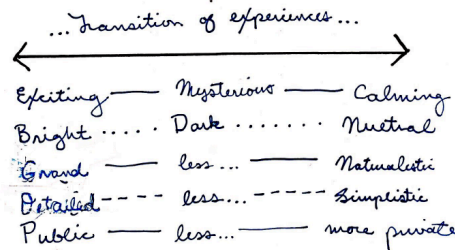
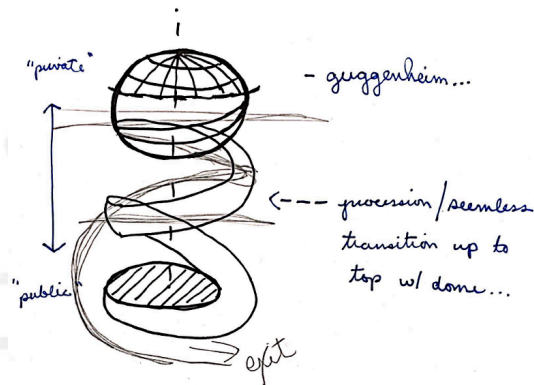
Ideation Inspiration Images

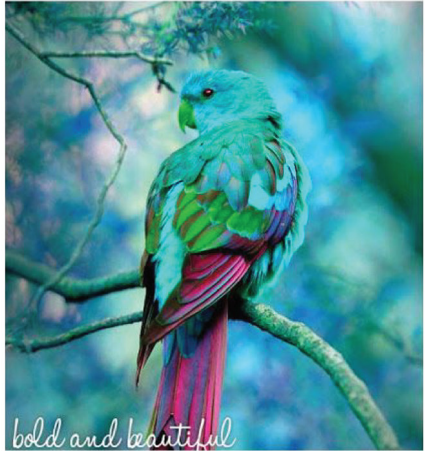
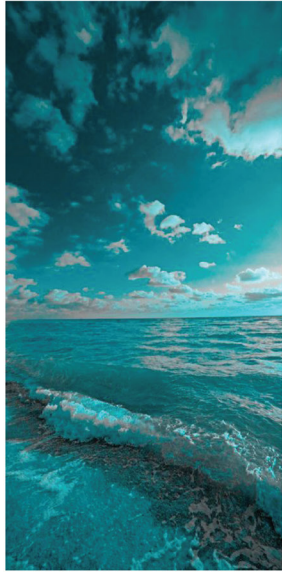
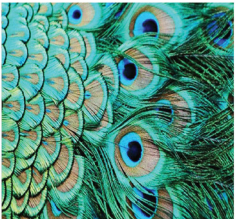
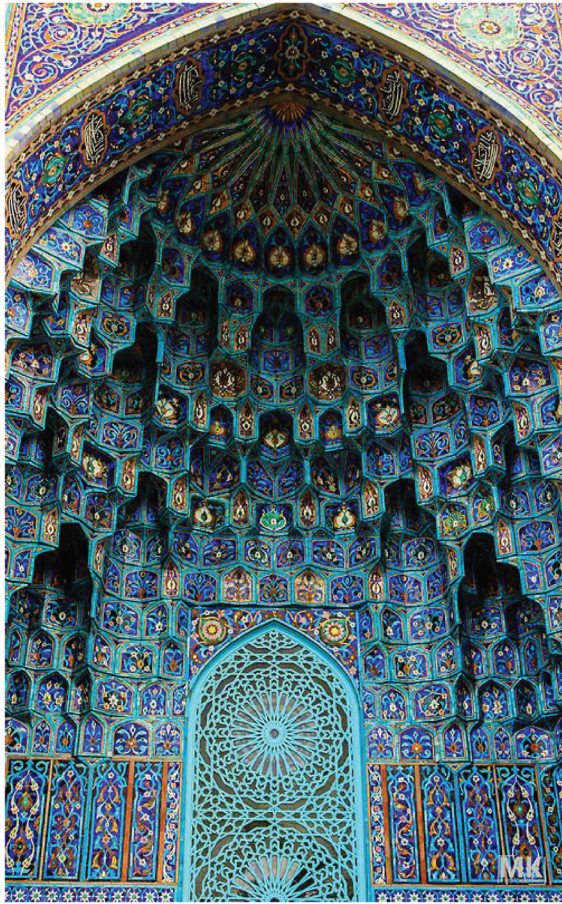


Initial Sketches

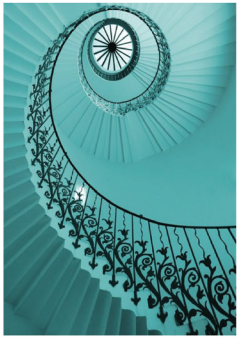
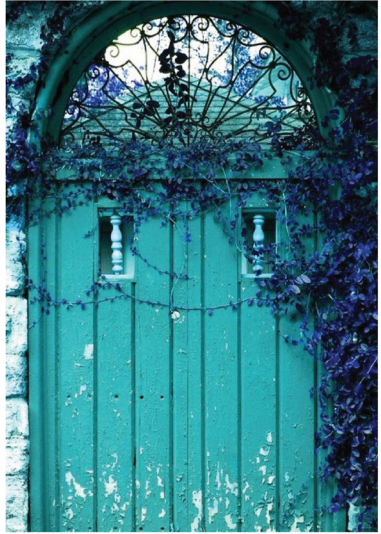

**"Around here, however,
we don't look backwards for very long.
WE KEEP
MOVING FORWARD,
opening new doors,
and doing new things,
BECAUSE
WE'RE CURIOUS
and curiosity keeps
leading us down new paths."**

WALT DISNEY



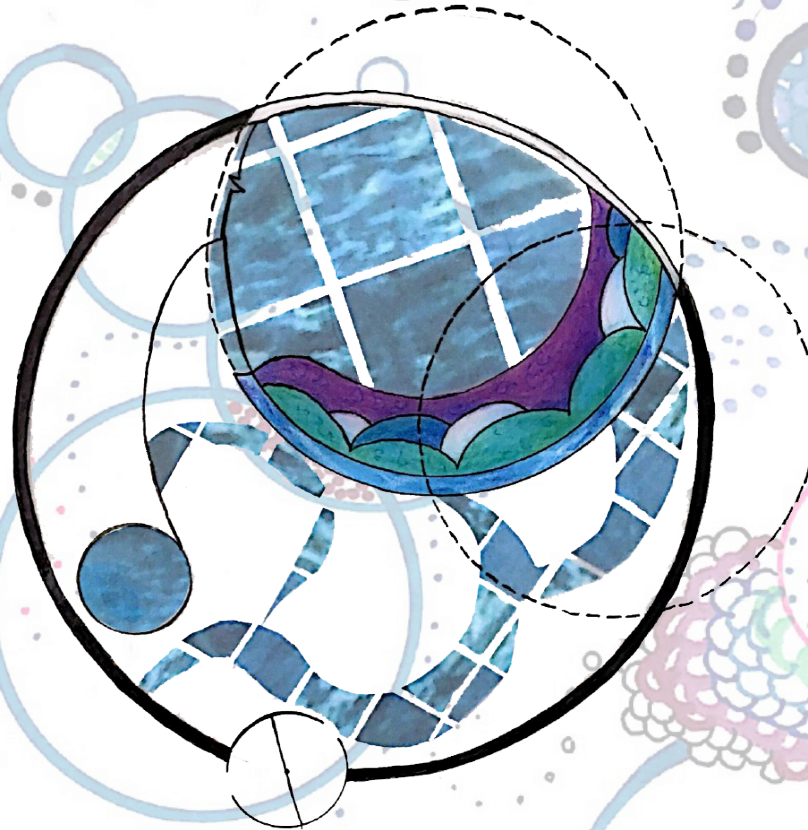
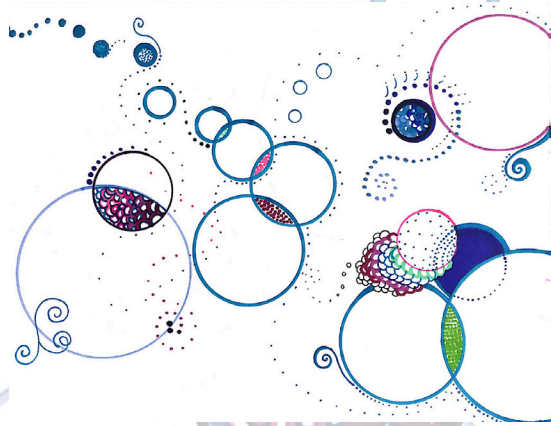


bold and beautiful



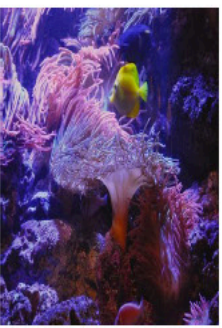
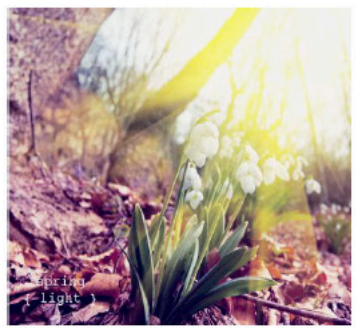
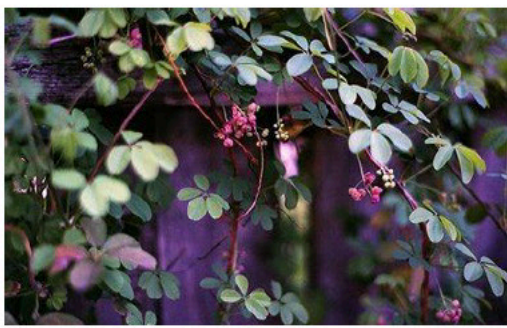
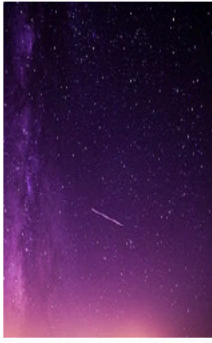
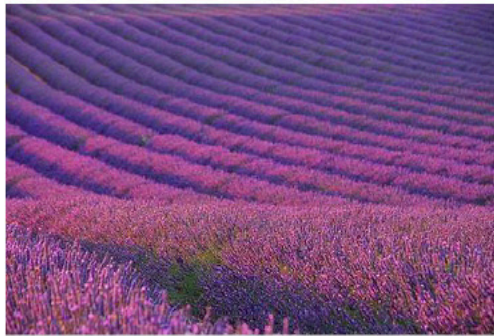
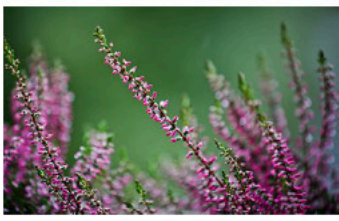
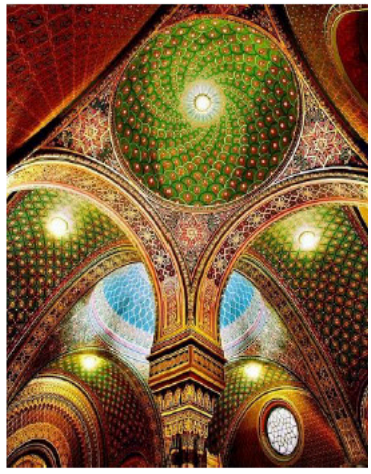
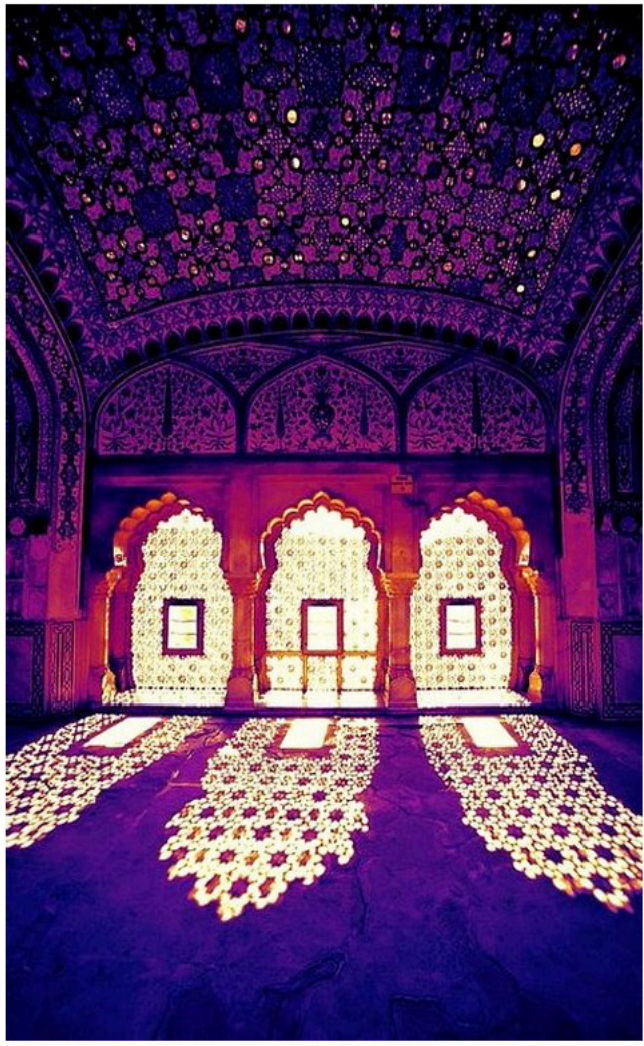
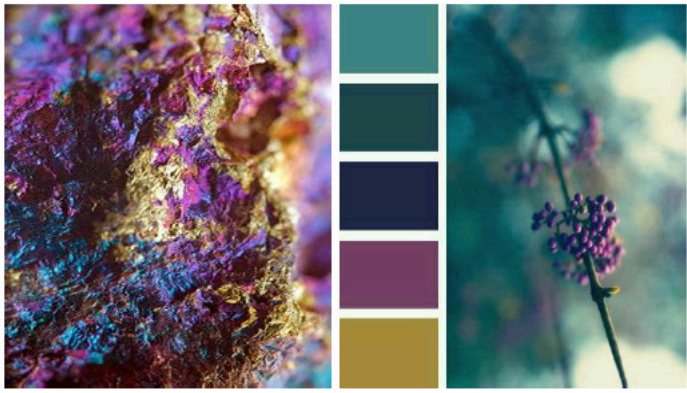
Whimsical

Wonder, Whimsy, Excitement



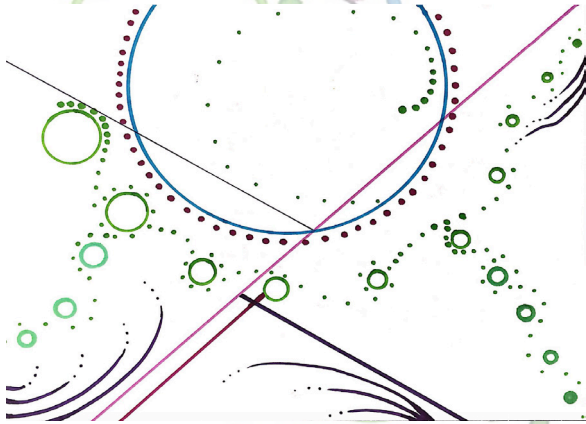
This first experience is designed to be an awe factor to initiate a sense of escape. It is meant to excite the mind through the **bright colors, water effects, exquisite detail, and an overall *grandeur.***





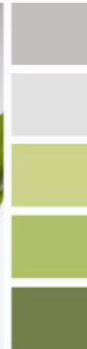
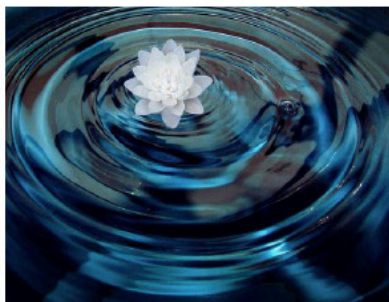
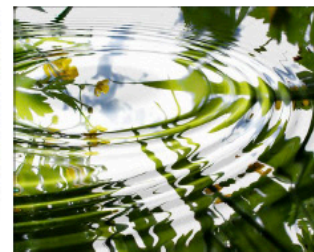
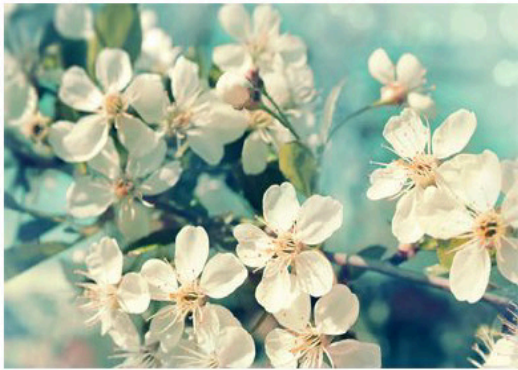
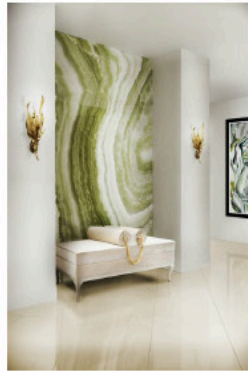
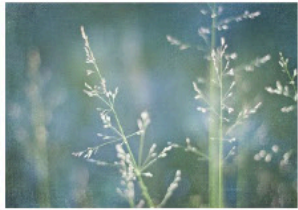
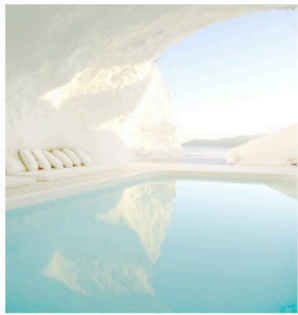
Mystical

Mystical, Mysterious, Hope



The second experience is a transitional space designed with the intent to inspire wonder in a calmer way. Through **rich colors**, *soft lighting*, and the *continuation of water*, it is meant to ignite comfort and hope.

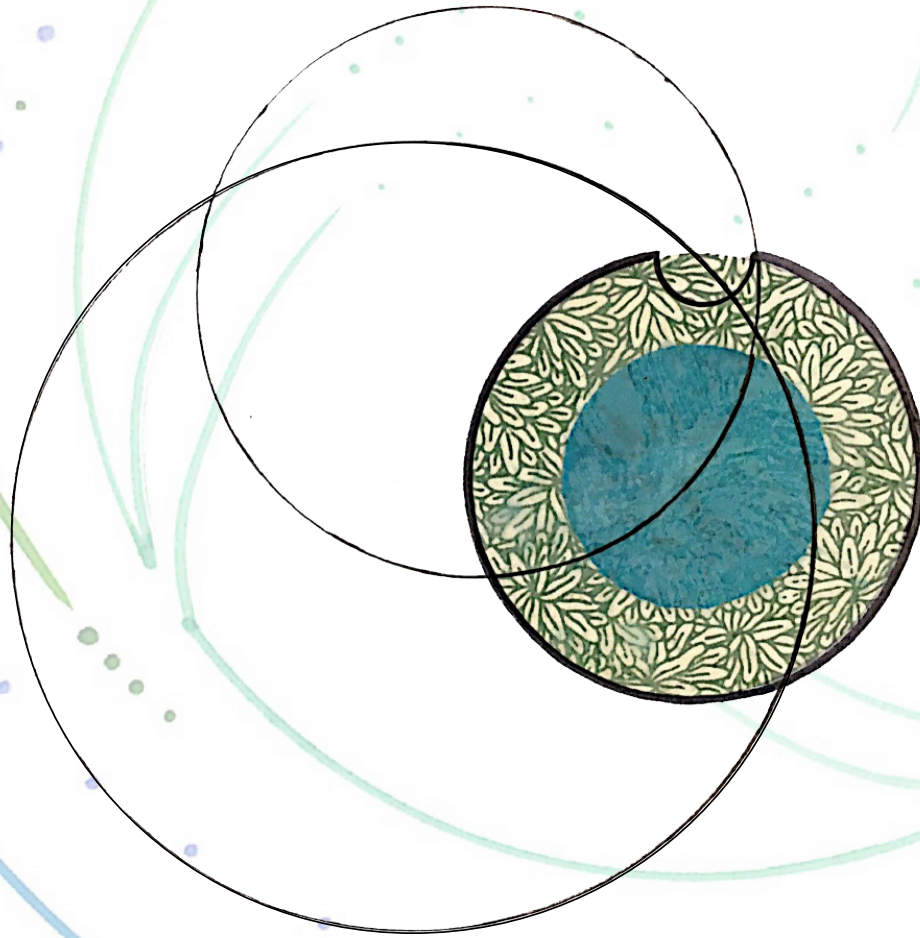
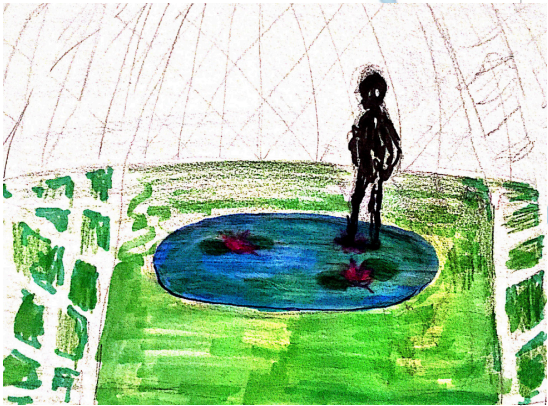




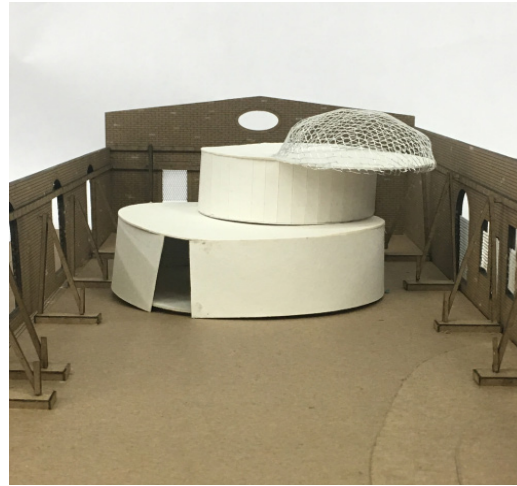
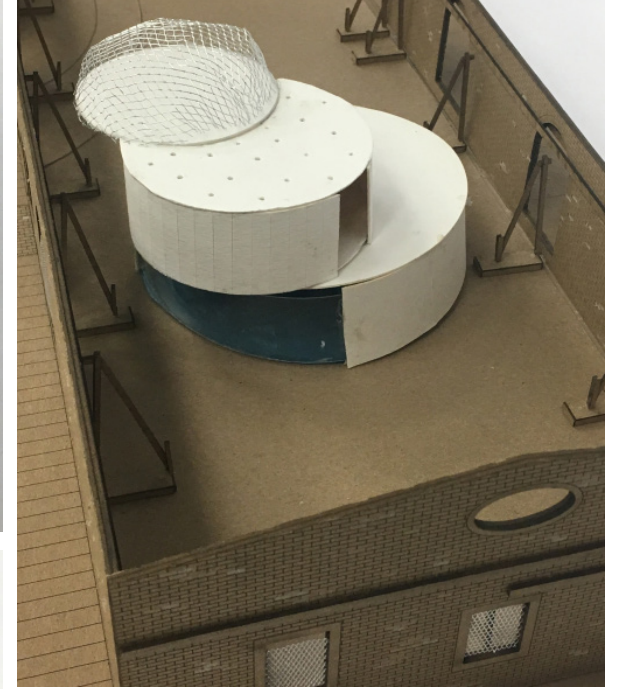
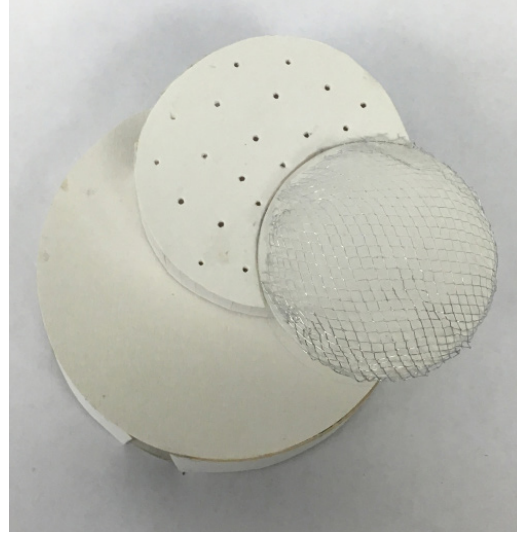
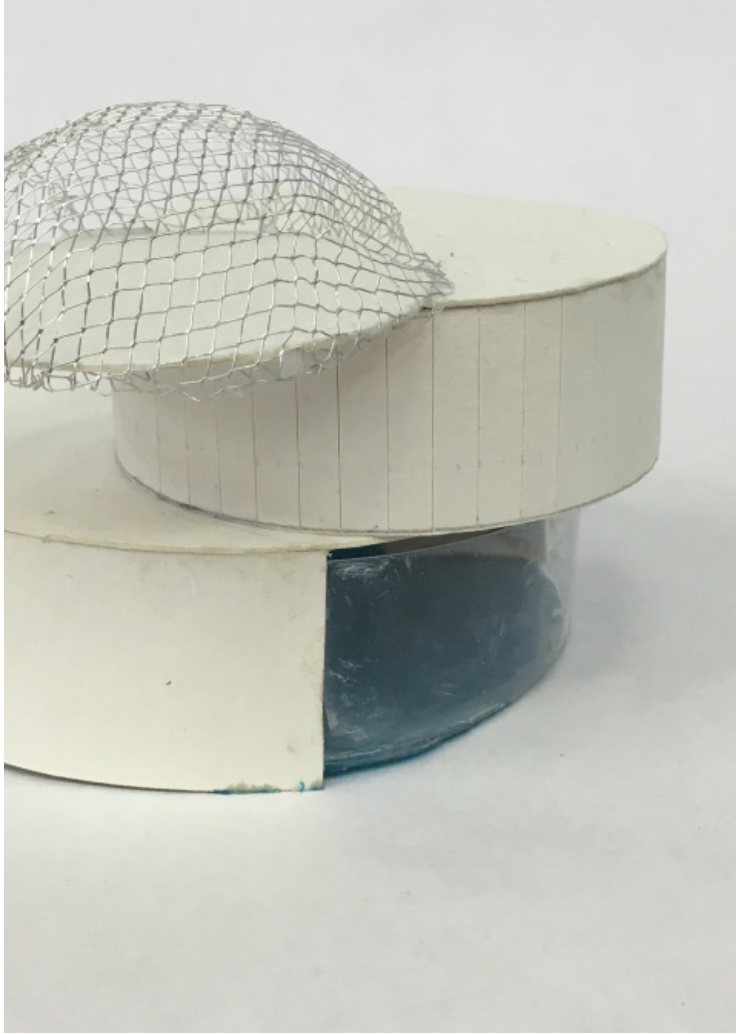
Serene

Comfort, Renewal, Innocence

The final experience is to act as a climax, instilling a final feeling of peace after the “journey.” A glass dome will fill the space with *light* and the *soft white atmosphere*, accented in *green*, is the perfect way to inspire renewal.



Site Scale Model



Detailed Folly Model

